

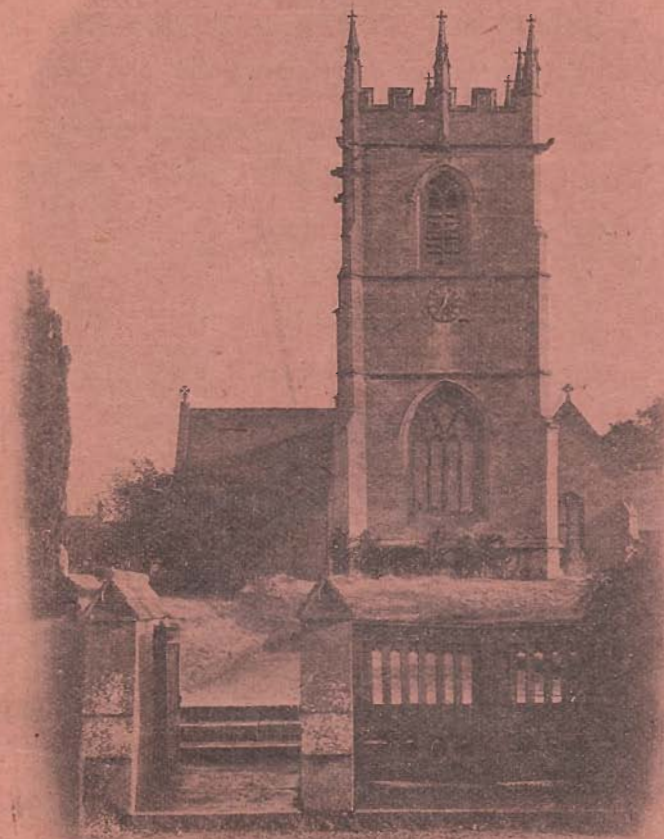
VOL. 10, NO. 5.

PRICE ONE PENNY.

MAY, 1907.

---

Badsey—with—Aldington and Wickhamford  
*Parochial Magazine.*



*laborer  
laborer  
labourer*

EVESHAM :

W. & H. Smith Ltd., The Journal Press.

# Badsey with Aldington & Wickhamford Parochial Magazine.

## EASTER.

The services at both our churches on Easter Day were similar in character to those of last Easter. The congregations throughout the day were good, and, although there were not so many communicants at Wickhamford as last year, it is encouraging to be able to chronicle an increase at Badsey. The exact numbers were as follows:—

|                    | Badsey. | Wickhamford. |
|--------------------|---------|--------------|
| Easter Day, 6-30   | 52      |              |
| " " 7-30           | 42      |              |
| " " 10-0           |         | 22           |
| " " 11-45          | 25      |              |
| Easter Monday      | 4       |              |
| Low Sunday         | 7       |              |
| Private Communions | 6       |              |
|                    | 136     | 22           |
|                    | 158     |              |

The music at the Choral Celebration was Merbecke's and at the Evening Service at Badsey the Canticles were sung to *Maunder in G*. There was more music than usual at the Morning Service at Wickhamford and there seems to be no particular reason why the services there should not generally be brightened by the addition of a little more harmony.

Both churches had been prettily decorated, and, in spite of the general scarcity of flowers, the liberality of parishioners provided an abundance of bloom for the work.

## EASTER VESTRIES.

The Badsey Easter Vestry was held at the Vicarage, on Easter Monday, at 8 p.m., the Vicar presiding.

The accounts showed that the year's receipts for Church Expenses amounted to £35 3s. 8½d., made up as follows:—

|                              | £   | s. | d. |
|------------------------------|-----|----|----|
| Collections in Church        | 33  | 18 | 2½ |
| Sundries                     | 0   | 5  | 6  |
| Rent of Church Land (½ year) | 0   | 15 | 0  |
| Donation                     | 0   | 5  | 0  |
|                              | £35 | 3  | 8½ |

The year's expenditure, including the cost of the new bier (£5 5s.), amounted to £36 8s. 9¼d., leaving a debt of £1 5s. 1d.

Although last year was a short one, the collections for Church Expenses appear to have been the largest on record, and, but for the purchase of the oak bier, there would have been a substantial credit balance.

The year's collections for special objects were as follows:—

|  | £   | s. | d.  |
|--|-----|----|-----|
| Sick and Needy                                 | 9   | 7  | 0¾  |
| S.P.C.K.                                       | 0   | 12 | 0   |
| Sunday School                                  | 2   | 1  | 5   |
| Evesham Cottage Hospital                       | 3   | 1  | 0   |
| Church Schools' Emergency League               | 2   | 11 | 3   |
| Foreign Missions                               | 2   | 16 | 0   |
| Poor Clergy Relief Corporation                 | 1   | 0  | 0   |
| Mission to Jews                                | 1   | 6  | 6½  |
| Chopiland Disaster Fund                        | 0   | 4  | 4½  |
| Vicar's Easter Offerings in lieu of Legal Dues | 3   | 9  | 11½ |
|  | £26 | 9  | 7¼  |

The total amount collected in Badsey Church during the year was thus £60 7s. 9¼d., the previous year's total being only £54 1s. 7d.

The Vicar presented the following balance sheet of the Sick and Needy Fund:—

| RECEIPTS.          |    | EXPENDITURE. |     |
|--------------------|----|--------------|-----|
|                    | £  | s.           | d.  |
| Balance from       |    |              |     |
| 1905-6             | 0  | 2            | 6½  |
| Collections 1906-7 | 9  | 7            | 0¾  |
|                    | £9 | 9            | 7¼  |
| Relief in money    |    |              |     |
| and kind           | 7  | 17           | 7½  |
| Balance in hand    | 1  | 11           | 11¾ |
|                    | £9 | 9            | 7¼  |

The following elections were made:—Churchwardens, Messrs. J. Sladden and H. Keen; Stewards, Messrs. C. A. Binyon and A. Sparrow.

The Wickhamford Easter Vestry was held in the Wickhamford Parish Room, on Wednesday, April 3rd, at 8 p.m., the Vicar presiding.

The accounts showed that the year's collections for Church Expenses amounted to £7 17s. 4¾d., and the expenditure to £9 16s. 2d. The Vicar

announced that Mr. Lees-Milne had expressed his willingness to defray the deficit of £1 18s. 9½, and Mr. Lees-Milne's offer was accepted with the thanks of the Vestry.

The collections for special objects were as follows:—

|   | £     | s. | d.  |
|---|-------|----|-----|
| Sick and Needy ... ..                                 | 4     | 17 | 10½ |
| S.P.C.K. ... ..                                       | 0     | 1  | 3   |
| Sunday School ... ..                                  | 0     | 18 | 7   |
| Evesham Cottage Hospital ... ..                       | 1     | 3  | 0   |
| Church Schools Emergency League ... ..                | 1     | 2  | 9   |
| Foreign Missions ... ..                               | 0     | 16 | 7½  |
| Poor Clergy Relief Corporation ... ..                 | 0     | 6  | 11  |
| Vicar's Easter Offerings in lieu of Legal Dues ... .. | 0     | 17 | 0½  |
|   | <hr/> |    |     |
|   | £10   | 17 | 2   |

The Sick and Needy Fund stood as follows:—

| RECEIPTS.                 |          | EXPENDITURE.                 |         |
|---------------------------|----------|------------------------------|---------|
| £                         | s. d.    | £                            | s. d.   |
| Balance from 1905-6... .. | 1 9 9    | Relief in money and kind ... | 3 8 0   |
| Collections 1906-7        | 4 17 10½ | Balance in hand              | 2 19 7½ |
|                           | <hr/>    |                              | <hr/>   |
|                           | £6 7 7½  |                              | £6 7 7½ |

Messrs. F. I. Hooper-Ingledew and R. Taylor were elected churchwardens, and Messrs. G. Agg, J. Newman and H. Richards were appointed sidesmen.

### NOTES AND NEWS.

The altar at Badsey has been enriched by the addition of a handsome upper-frontal of pressed velvet, new riddels and a new silk super-frontal—all gifts of the Vicarage Sewing Class.

Mr. F. I. Hooper-Ingledew was admitted Churchwarden of Wickhamford at the Archdeacon's Visitation on Friday, April 19th.

Bishop Mylne held a Confirmation at South Littleton on S. George's Day (April 23rd), when the following candidates from Badsey were confirmed:—Beatrice Mary Ballard, Florence Jane Harris and Emma Wilson.

The services on Whit Sunday will be the same as on Easter Day. See March number of *Magazine*.

It would be welcome news to hear that all our Bishops had had the courage to follow the excellent example set by the new Bishop of Truro, Dr. Stubbs. In reply to an invitation to open a bazaar by which it was hoped to clear off a debt of £690 on Liskeard Church, Bishop Stubbs wrote to say that he had a thorough dislike for bazaars, that he should decline to open any and was unable to attend the one at Liskeard.

Though one may hesitate to inscribe "Ichabod" over the portals of the church which looks for support to bazaars and entertainments, it may safely be affirmed that such a church shows unmistakable signs of departing glory.

### THE REGISTERS.

#### BADSEY.—BAPTISM.

April 21st.—Blanche Marie Collett.

#### BADSEY.—MARRIAGES.

April 24th.—George Fowler and Emily Jane Taylor.

" " —Arthur William Geden and Maud Mary Keen.

#### WICKHAMFORD.—BAPTISM.

April 28th.—Alfred Malcolm Drinkwater.

### OFFERINGS FOR THE MONTH.

|                                     | BADSEY. |        | WICKHAMFORD. |         |
|-------------------------------------|---------|--------|--------------|---------|
|                                     | £       | s. d.  | £            | s. d.   |
| March 28.—Sick and Needy ... ..     | 0       | 1 9    | ...          | ...     |
| " 29.—Mission to Jews ... ..        | 1       | 6 6½   | ...          | 0 13 0½ |
| " 31.—Easter Offerings ... ..       | 3       | 9 11½  | ...          | 0 17 0½ |
| April 1.—Sick and Needy ... ..      | 0       | 5 6    | ...          | ...     |
| " 5.—Sick and Needy ... ..          | 0       | 2 0    | ...          | ...     |
| " 7.—Sick and Needy ... ..          | 0       | 3 11   | ...          | ...     |
| " "—Church Expenses 1 3 0½ ... ..   | 1       | 3 0½   | ...          | 0 3 8½  |
| " 14.—Sick and Needy ... ..         | 0       | 2 4    | ...          | ...     |
| " "—Church Expenses 0 13 1 ... ..   | 0       | 13 1   | ...          | 0 4 9½  |
| " 21.—Sick and Needy ... ..         | 0       | 2 4    | ...          | 0 1 0   |
| " "—Church Expenses 0 12 5 ... ..   | 0       | 12 5   | ...          | 0 5 1½  |
| " 28.—Sick and Needy ... ..         | 0       | 1 1    | ...          | ...     |
| " "—Church Expenses 0 12 11½ ... .. | 0       | 12 11½ | ...          | 0 2 0   |
|                                     | <hr/>   |        | <hr/>        |         |
|                                     | £8      | 16 11  | £2           | 6 8½    |

