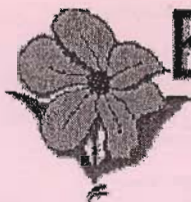


SCHEDULE

106th ANNUAL



Badsey Flower Show

TO BE HELD ON

Saturday 26th July, 2008

AT

Badsey Recreation Ground, Sands Lane

The Ground will be opened at 1.00 p.m.

Admission £2

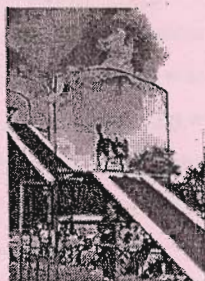
OAP and Children £1

FREE CAR PARKING

FEATURING AS SEEN ON TV

Cheshire Dog Display Team

A superb, entertaining and informative display comprising of a variety of dogs of all shapes and sizes, rescue dogs, pet dogs and doggie stars from the world of TV. Credits include ITV's Brilliant Creatures, BBC's Vets in Practice and Channel 4's Pet Rescue and ITV's Animal Tales to name but a few.



Please don't forget Entry Night

Tuesday 23rd July 2008 at Badsey First School 6.00-9.00 p.m.

Tombola Donations Required Please.

Appreciated and Accepted at Entry Night

Entries also accepted at Entries Box situated inside

Spar Stores, High Street, Badsey.

PLEASE TAKE EXTRA ENTRY FORMS

CUP AND TROPHY WINNERS – 2006 (Last Show)

<u>CUP AND TROPHY TITLE</u>	<u>AWARDED TO</u>
THE SIR JULIUS SLADDEN CHALLENGE CUP	FRED HUNT (most points in the Show)
THE A.C.SPARROW MEMORIAL CUP	FRED HUNT (most points for Flowers)
THE EDGAR OLIVER CUP	FRED HUNT (most points for Roses/Sweet Peas)
THE IAN SIMMONDS TROPHY	ELIZABETH BOLLAND (Best Garden)
THE G.H.STEWART CUP	LYNN GIBSON (Floral Art)
THE MARY LESTER MEMORAL CUP	JENNY QUINEY (best exhibit in Floral Art)
C.A.BINYON CUP	FRED HUNT (most points for vegetables)
THE E.M.NORTON TROPHY	LUCY INSLEY (most points for Fruit)
THE HONEYBOURNE WINEMAKERS TROPHY	BRIAN SMITH (Adult - Beer & Wine)
THE A.J.BRAZIER CUP	LILY JAMES (most points Pre-School)
THE TED WHEATLEY CUP	ZOE INSLEY & ABBIE JAMES (most points 5-7 yr. old)
THE MAURICE HARVEY CUP	MATTHEW ANDREWS (most points 8-11 yr. old)
THE T CUP	ANTHONY HEWLET (most points 12-15 yrs.)
THE RON JONES CUP	JULIE GARDNER (Best tub or Hanging Basket)
THE WINNIE JONES MEMORIAL CUP	RUBY GAILEY (Most points in Senior Classes)
THE HENRY KING CHALLENGE CUP	FRED HUNT (Most entries in Show)
THE ORGINAL GH STEWART CUP	SHELIA ANDERSON (Adult – Domestic Classes)
THE SEWARD HOUSE TROHPY	JEANNE BOON (Adult - Handicrafts & Arts)
THE W.HATCH & P.SANDFORD CHALLENGE CUP	TONY SPINKS (Adult - Photography)
THE WILL DALLIMORE LITERATURE CUP	WILL DALIMORE (Adult – Write a Shakespearean Sonnet)
THE ELLEN EXON CUP	CARA SPITTLE (Collage – Theme – Summer Flowers)

ANY DONATIONS FOR THE TOMBOLA WOULD BE
GREATLY APPRECIATED AND RECEIVED
AT ENTRY NIGHT AT BADSEY FIRST SCHOOL

Badsey Flower Show Committee 2008

Chairman – Gordon BOON

Vice Chair – Steve ENTWISTLE Hon. Treasurer – Pat SPARROW

Secretary – Lizzie NOYES (01386 831112)

Minutes Secretary- Liz Cudd

Adrian BARRADELL	Andrew BEAUCHAMP	Dawn BRUNNING
Michael DRAPER	Phil INSLEY	Roger MARTIN
Rosemary SMITH	Neil THOULD	Keith FOSTER

FROM YOUR COMMITTEE

Dear Entrant,

Welcome to the schedule for the 2008 Show.

Most of you will be aware that the 2007 show was cancelled. The committee took this disappointing decision in the week prior to the show due the abnormal rainfall and subsequent flooding. This was the first time the show has had to be cancelled in living memory.

The committee has kept the schedule as for 2007 except for two changes.

Class 154 – Photography

“Floods” has replaced “Badsey Flower Show 2006”

Class 155 - Photography

“A Friend” has replaced “Self Portrait”

The effort put into the improvements planned for the 2007 show has not been wasted. The Dog Display Team along with other new ideas will be in this years show.

Following the two consecutive years in which the show has incurred financial losses the enthusiasm to provide an entertaining day for everyone has not diminished.

Please tell your friends and in particular newcomers to the village about this unique event.

Thank you for your support and the committee look forward to seeing you on Saturday 26th July.

Gordon Boon

Chairman

Website address for Badsey Flower Show: www.badsey.org.uk

RULES FOR EXHIBITORS

1. All Classes in all Divisions are open to all, with the exception of Division F, which is open only to those living within the Parish of Badsey and Aldington.
2. All exhibits must be the property of the Exhibitor and must have been produced by him/her on his/her own ground or have been in his/her possession for at least three months, except where otherwise required. Any breach of this Rule, proved to the satisfaction of the Committee, will disqualify the Exhibitor from competing at any further Show and any prizes awarded will be withheld. The Committee, having reason to believe that this Rule has been disregarded in the past, reserve to themselves the right to inspect the gardens of Exhibitors either before or after the Show. The Committee also reserve the right to refuse any entries. In case of dispute, any prize awarded will be withheld until the Committee has settled the matter.
3. No Exhibitor shall take more than one prize in any one Class. If more than one exhibit is shown in any one Class, further entrance fees must be paid.
4. Prizes may be withheld at the discretion of the Judges.
5. Exhibitors should bring their exhibits not later than 10 a.m. on the morning of the Show and must provide plates, stands or holders for their flowers, fruit or vegetables. No exhibits will be received after 10.30 a.m.. All vegetables must be exhibited in a clean state. Exhibitors, before leaving the tent, should see that their exhibits are properly labelled and numbered.
ALL EXHIBITORS MUST LEAVE THE TENTS BY 10.45 a.m.
A WARNING-BELL WILL BE RUNG AT 10.30 a.m.
6. The Marquees will open at 2.00 p.m. and close at 5.00 p.m.
NOTHING EXHIBITED SHALL BE REMOVED FROM THE MARQUEES BETWEEN THESE TIMES.
7. All postal entries will close on **TUESDAY 23rd JULY** and these entries will not be accepted without payment of the entry-fee.
Such entries should be sent to the Hon. Secretary at:
4 HIGH STREET, BADSEY, EVESHAM, WORCS, or place your entry including the appropriate fee in the Entries Box in the Spar Shop, High Street, Badsey. The Secretary will sit to receive entries at: **BADSEY FIRST SCHOOL** from 6.00pm. To 9.00pm. On **TUESDAY 23rd JULY**
No entry will be accepted after this date.
8. A free admission-ticket to this year's Show will be given to all Exhibitors who pay £3.00 or more in entry fees.
9. The award of the Judges will be final. The Committee cannot alter the Judges' decision, except for a breach of Rule 2.
10. Whilst every care will be taken to protect the property of the Exhibitors the Committee cannot be held responsible for any loss or damage

THESE RULES WILL BE STRICTLY ENFORCED

BADSEY FLOWER SHOW

SHOW SCHEDULE 2008

DIVISION A

Entry fee 20p. Per class

Note: The British Rose Society classifications are in use. Hybrid Tea is now Bush Large Flowered and Floribunda is now Bush Cluster Flowered

Flowers and Pot Plants		1st Prize	2nd Prize	3rd Prize
Class		p.	p.	p.
Rose Section				
1	One Vase, Bush Large Flowered, 5 Blooms, one variety or mixed	£1	60	40
2	One Vase, Bush Large Flowered, 3 Blooms, one variety	£1	60	40
3	One Vase, Bush Large Flowered, one Specimen Bloom	£1	60	40
4	One Vase, Rambler or Climbing, not more than 3 Sprays, one variety or mixed	£1	60	40
5	One Vase, Bush Cluster Flowered, 3 Stems, one variety or mixed	£1	60	40
6	A Rose Button-Hole, own foliage	£1	60	40
Sweet Pea Section				
7	A Bowl to be judged for quality, and all-round decorative effect, any natural foliage or grasses may be used	£3	£2	£1
8	One Vase, 9 Stems, Distinct	£1	60	40
9	One Vase, 9 Stems, Mixed	£1	60	40
Pot Plant Section				
10	One Planted Patio Pot, pot not to exceed 12 inches (30cm)	£1	60	40
11	One Plant in Flower, pot diameter not to exceed 10½ inches (27cm)	£1	60	40
12	One Plant Foliage, pot diameter not to exceed 10½ inches (27cm)	£1	60	40
13	One Fuchsia in Flower, pot grown, pot diameter not to exceed 10½ inches (27cm)	£1	60	40
14	One Standard Fuchsia in Flower, pot grown, pot diameter not to exceed 10½ inches (27cm)	£1	60	40
15	One Begonia in Flower, pot grown, pot diameter not to exceed 10½ inches (27cm)	£1	60	40
16	One Cactus, pot diameter not to exceed 9 inches (23cm)	£1	60	40
17	One Succulent, pot diameter not to exceed 9 inches (23cm)	£1	60	40
Cut Flower Section				
18	Three Vases, Cut Flowers, outdoor grown, one kind per vase	£3	£2	£1
19	Two Vases, Annuals, one kind per vase	£1	60	40
20	A Single Flower Button-Hole, own foliage	£1	60	40
21	One Vase, Garden Flowers, to face all-round	£1	60	40
22	Highest Number of Flower Varieties in a bowl / vase	£1	60	40
23	Three Blooms, floating in a bowl of shallow water - any variety of blooms - any shape of bowl	£1	60	40
24	One Vase, shrub, five stalks	£1	60	40

DIVISION B

Entry fee 20p. Per class

The exhibitor must be 65, or over, at the date of the Show. The exhibitor's age must be shown on the Entry Form. All foodstuffs must be covered by clear plastic. All flowers, fruit or vegetables used, need not have been grown by the entrant, UNLESS SPECIFIED. Unless otherwise specified exhibits in all Classes must be made and arranged by ONE PERSON, the entrant.

Class	Seniors	1st Prize p.	2nd Prize p.	3rd Prize p.
25	A Vase of Mixed Garden Flowers, to face all-round	£1	60	40
26	A Cake, any variety, any size	£1	60	40
27	Handicraft - One Item, Free-Choice, any medium	£1	60	40
28	Picture - painting or drawing, any medium (Any signature, or others means of identification, must be effectively covered)	£1	60	40
29	Novelty Item - 3 elements, home-grown - 1 flower in vase + 1 vegetable + 1 fruit	£1	60	40

DIVISION C

Entry fee 20p. Per class

RULES for FLORAL ART and reasons for disqualification of entries: -

Exhibit will be marked "Not according to schedule"

1 Not complying with the Schedule in respect of content and size .

2 The cut ends of all fresh plant material must be in water or water retaining material.

N.B. (Strong fibrous stems do not have to be in water)

3 The use of artificial plant material is **not** allowed unless specified in the Schedule

Class	Floral Art	1st Prize p.	2nd Prize p.	3rd Prize p.
30	" Golden Days of Summer"- A freestanding pedestal exhibit, competitor to bring their own pedestal. Some artificial plant material can be included	£3	£2	£1
31	"The Beauty of Foliage"- A foliage exhibit Size 24ins(61cms) width x 24ins(61cms) depth x height unlimited	£2	£1	50
32	"Shades of Pink"- An exhibit Size 24ins(61cms) width x 24ins(61cms) depth x height unlimited	£2	£1	50
33	" Touch of the Orient"- An exhibit to include water. Size 24ins(61cms) width x 24ins(61cms) depth x height unlimited	£2	£1	50
34	"Diner for Two" .A table exhibit to include a candle or candles. Size 18ins(46cms) width x 18ins(46cms) depth X 24ins(61cms) height.	£2	£1	50
35	"Floral Inspired" A decorated card, artificial / dried plant material.	£2	£1	50
Novices Classes (For those who have never won a first prize for floral art)				
36	"Down by the Sea"- An exhibit of your choice Size 24ins(61cms) width x 24ins(61cms) depth x height unlimited	£2	£1	50
37	" Pretty China" An exhibit to compliment a plate, (to include a plate) Size 18ins(46cms) width x 18ins(46cms) depth x 18ins(46cms) height	£2	£1	50

DIVISION D

Entry fee 20p. Per class

Class	Vegetables	1st Prize p.	2nd Prize p.	3rd Prize p.
38	A Collection of Four different kinds of Vegetables	£3	£2	£1
39	Nine Pods of Peas	£1	60	40
40	Nine Pods of Dwarf French Beans	£1	60	40
41	Seven Cherry Tomatoes, on a paper plate	£1	60	40
42	Five Pods of Runner Beans	£1	60	40
43	Five Pods of Broad Beans	£1	60	40
44	Five Kidney Potatoes, to be named	£1	60	40
45	Five Round Potatoes, to be named	£1	60	40
46	Five Onions, Dressed, tops not to exceed 3 ins. (76mm)	£1	60	40
47	Five Beets, Round, tops to be trimmed to 3 ins. (76mm)	£1	60	40
48	Five Carrots, Long Rooted, tops to be trimmed to 3 ins. (76mm)	£1	60	40
49	Five Carrots, Stump Rooted, tops to be trimmed to 3 ins. (76mm)	£1	60	40
50	Three Courgettes	£1	60	40
51	Five Tomatoes	£1	60	40
52	One Vegetable Marrow, fit for the table	£1	60	40
53	One Dwarf Cucumber	£1	60	40
54	One Standard Cucumber, frame or glasshouse	£1	60	40
55	One Bunch of Salad Onions, bunch not less than 3ozs (85gms)	£1	60	40
56	Twelve Shallots, pickling, not to exceed 1 inch (25mm) in diameter	£1	60	40
57	A Collection of bunched, Fresh Herbs	£1	60	40
58	One Pot of single variety Herb, home grown, pot not to exceed 8 ins. (20cm) in diameter	£1	60	40
59	One Dish of any other Vegetable - not specified above	£1	60	40
60	Novelty Item - The Funniest Vegetable	£1	60	40

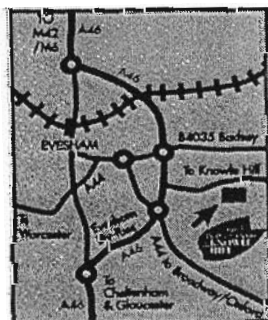


Tel: 01386 831527 Fax: 01386 832915
www.knowlehill.com

Open Daily: 9.00am - 5.00pm

How to find us:

Follow signs off A46 Evesham Bypass to Knowle Hill, (between A44 to Broadway and B4035 to Badsey) then half a mile on the right.



DIVISION E

Entry fee 20p. Per class

Class	Fruit	1st Prize	2nd Prize	3rd Prize
		p.	p.	p.
61	Collection of Fruit, Three plates, Three kinds, one kind per plate, outdoor	£1	60	40
62	One dish of Raspberries	£1	60	40
63	One dish of Gooseberries	£1	60	40
64	One dish of any other Fruit	£1	60	40
65	Three sticks of Rhubarb, top trimmed	£1	60	40

DIVISION F

Entry fee 20p. Per class

Note: As all the Classes in this section are judged in-situ, they are open for the residents living within the Parish of Badsey and Aldington only.

(Prizes may be given as vouchers)

Class	Gardens	1st Prize	2nd Prize	3rd Prize
		p.	p.	p.
66	Most Attractive Garden - large or small - must be visible from the road or public footpath, contributing to the appearance of the Village	£30	£10	£5
67	Hanging Basket - judged at your home - must be visible from the road, contributing to the appearance of the Village	£5	£3	£2
68	Garden Tub (Any planted container) - judged at your home - must be visible from the road, contributing to the appearance of the Village	£5	£3	£2

Here are a few things you will be able to enjoy on show day

- ☺ Cheshire Dog Display Team
- ☺ Three Marquees of your Exhibits
- ☺ Stalls-Bar-Raffle-Tombola-Ice Cream
- ☺ Barbecue-Sideshow & Teas
- ☺ Celebration Reed & Brass Band
- ☺ Childrens Dancing Display
- ☺ Funfair
- ☺ Childrens Races
- ☺ Dog Show - Greenacres Rescue Centre



All of this and FREE Car Parking.
Gates open at 1:00 pm

DIVISION G1

No Entry fee

All entrants in this division must be within the ages specified at the date of the Show

All entries in these Classes must be made and arranged only by one person

Exhibits in these Classes must be made and arranged only by the entrant

The Age of the entrant must be shown on the Entry Form

All food stuffs are to be covered with clear plastic

Any signature or means of identification must be effectively covered

Any flower, plant, fruit or vegetable used, need not be grown by the entrant

Entries in class 83 will preferably be typed, written on one side of A4 paper and submitted on Entry Night. NO name to be written on your entry – a number will be given. If you are submitting your entry at the shop please put it in an envelope with your name on the envelope.

Class		1st Prize	2nd Prize	3 rd Prize
		p.	p.	p.
69	A Model of a Flower - made from plasticine / PlayDoh type material	50	40	30
70	A picture, not exceeding A3 sized paper - 12 ins. x 17 ins. (30 cm x 42 cm), depicting "Your favourite children's cartoon character", tracing excluded	50	40	30
71	Novelty animal, made from any type of vegetables or fruits	50	40	30
72	Decorated potato	50	40	30
73	Decorated paper plate, using flowers	50	40	30
74	Paint a face mask	50	40	30
		1st Prize	2nd Prize	3 rd Prize
		p.	p.	p.
	Children 5, 6 & 7 Years			
75	A picture, not exceeding A3 size - 12 ins. x 17 ins. (30 cm x 42 cm), depicting "Your favorite childrens cartoon character", tracing excluded	50	40	30
76	Novelty animal made from any type of vegetables or fruits	50	40	30
77	Bling up your Teddy Bear, maximum size, 12 inches (30cm)	50	40	30
78	A hand made sock puppet	50	40	30
79	A Floral Decoration in an egg cup	50	40	30
80	Decorate Two digestive biscuits	50	40	30
81	Decorate a Plant Pot, maximum size, 6 inches (15cm)	50	40	30
82	One photograph, unmounted and unframed, taken by the entrant of "Toy", maximum size 5 inches x 7 inches (13cm x 18cm)	50	40	30
83	Poetry, write a poem about 'A few of my favourite things' to be written on one side of A4 sheet, entries to be submitted on Entries Night.	50	40	30
	No name to be written on your entry – a number will be given.			

Badsey Flower Show Committee wishes to express their sincere thanks
To Knowle Hill Plant Centre for their generous support over many years

Class		1st Prize p.	2nd Prize p.	3rd Prize p.
Class Children 8, 9, 10 & 11 Years				
84	Picture of a Super Hero, not exceeding A3 size - 12 ins. x 17 ins. (30 cm x 42 cm), tracing excluded	50	40	30
85	Design your own "Dr Who Monster", made from any type of Vegetables or Fruits	50	40	30
86	Decorated Pebble / Stone	50	40	30
87	Design a face on a Paper Plate, using any materials	50	40	30
88	Floral Decoration in an 8 inch (20 cm) or smaller Basket	50	40	30
89	Nine Sweets on a paper tea plate	50	40	30
90	Decorate Five Fairy Cakes on a paper plate	50	40	30
91	Five Flap Jacks on a paper plate	50	40	30
92	Handicraft - Decorative Card, one item, free choice	50	40	30
93	Handicraft - Soft Toy, one item, free choice	50	40	30
94	Handicraft – Cross-Stitch, Cushion, Tapestry, one item, free choice	50	40	30
95	Handicraft - Models, one item free choice, original design, not kit form (Static)	50	40	30
96	Handicraft - Models, one item, free choice, kit form, including Lego type etc (Static)	50	40	30
97	Handicraft - Models, one item, free choice, kit form, including Lego type etc (Mobile)	50	40	30
98	One photograph, unmounted and unframed, taken by the entrant of "Water", maximum size 5 inches x 7 inches (13cm x 18cm)	50	40	30
99	Design a CD cover	50	40	30
		1st Prize p.	2nd Prize p.	3rd Prize p.
Class Young People 12, 13, 14 & 15 Years				
100	Design a CD cover for a Pop Group	50	40	30
101	Handicraft - Decorated Pebble / Stone	50	40	30
102	Handicraft - Decorative Card, one item, free choice	50	40	30
103	Handicraft – Cross-Stitch, Cushion, Tapestry, one item, free choice	50	40	30
104	Handicraft - Any medium, one item, free choice, original construction, not kit form (Static)	50	40	30
105	Handicraft - Models, one item, free choice, in kit form including Lego type etc (Static)	50	40	30
106	Handicraft - Models, one item, free choice, in kit form including Lego type etc (Mobile)	50	40	30
107	Five Plain Scones	50	40	30
108	Three Ginger-Bread Men	50	40	30
109	Victoria Sponge Cake, round, approximately 7 inches (18 cm) across	50	40	30
110	Table Decoration using flowers or foliage, maximum size 18 x 18 inches (46cm x 46cm)	50	40	30
111	Miniature Garden in any container, not exceeding seed tray size 10 inches x 15 inches (26cm x 38cm)	50	40	30
112	One photograph, unmounted and unframed, taken by the entrant of "On Holiday", maximum size 5 inches x 7 inches (13cm x 18cm)	50	40	30

DIVISION G2

No Entry fee

All entrants in this Division will be pupils of Badsey First School

The work will be part of the school topics

All entries must be on A4 Paper

Any medium can be used.

BADSEY FIRST SCHOOL ART ENTRIES

Class **Foundation**

113 Children to be advised by Badsey School

1st Prize	2nd Prize	3rd Prize
p.	p.	p.
50	40	30

Class **Key Stage 1**

114 Children to be advised by Badsey School

1st Prize	2nd Prize	3rd Prize
p.	p.	p.
50	40	30

Class **Key Stage 2**

115 Children to be advised by Badsey School

1st Prize	2nd Prize	3rd Prize
p.	p.	p.
50	40	30

The Wheatsheaf Inn

Badsey.

Tel 01386 830380

Fully non-smoking Restaurant

Fine Wines and Cask Ales

En-suite Accommodation

Function Room

Benches out front & rear Court Yard

Open all day Friday, Saturday & Sunday

Please call for booking Accomodation or Function Room

A Warm Welcome Awaits You

John Dallimore



Painting and Decorating

- Interior and Exterior
- Wallpapering
- Coving


Free Estimates

Tel No. Evesham 831012

FiesTa Cakes & CaTERRERS
of Wickhamford
NR. Evesham
Tel.: 01386 834183
Full Catering
Service Available
REFRIGERATED TRAILER
FOR MORE

*Home Baking
a Speciality*

*Open
7 Days a
Week*



DIVISION H

Entry fee 20p. Per class

All entries in these classes must be made and arranged only by ONE PERSON

All food-stuffs must be covered by clear plastic film. The entrant need not grow any fruit or vegetable used. Exhibits in these Classes must be made and arranged only by the entrant

All preserves should be clearly labelled with date when made.

Class		1st Prize	2nd Prize	3rd Prize
		p.	p.	p.
Domestic				
116	One Loaf of Home-Made Bread - NOT MACHINE MADE	£1	60	40
117	Five Bread Rolls, Brown and Round, to be presented in a basket	£1	60	40
118	Five Plain Scones on a paper plate	£1	60	40
119	Five Cheese Scones on a paper plate	£1	60	40
120	Five Sausage Rolls, short crust pastry, on a paper plate	£1	60	40
121	Bread Pudding, THREE squares on a paper plate	£1	60	40
122	One Round of Shortbread, maximum 9 inches (23cm) across, scored into 8 sections	£1	60	40
123	Ginger Bread, to be baked in a Square or Oblong tin, presented out of the tin	£1	60	40
124	Five Home-Made Flap Jacks, any variety, on a paper tea plate	£1	60	40
125	Lemon Drizzle Cake	£1	60	40
126	Victoria Sponge Cake, Round, approximately 7 inches (18cm) across	£1	60	40
127	Fruit Cake, to be baked in a 6 inch (16cm) Round tin (Recipe for this Fruit Cake is at the foot of this page)	£1	60	40
128	Savory Flan in a Pastry Case, presented out of the tin / dish in which it is cooked	£1	60	40
129	Fruit Tart, cooked on a plate, comprising fruit between two layers of short crust pastry	£1	60	40
130	Treacle Tart with lattice top, up to 8 inches (20cm) across	£1	60	40
131	Three Meringues - NO FILLING - on a paper plate	£1	60	40
132	One bottle Home-Made White Wine, Sweet or Dry, in a clear glass bottle	£1	60	40
133	One bottle Home-Made Red Wine, Sweet or Dry, in a clear glass bottle	£1	60	40
134	A plain, clear Jar of Jam, Stone Fruit, top sealed with wax disc and cellophane cover	£1	60	40
135	A plain, clear Jar of Jam, Soft Fruit, top sealed with wax disc and cellophane cover	£1	60	40
136	A plain, clear Jar of Jam, Strawberry, top sealed with wax disc and cellophane cover	£1	60	40
137	A plain, clear Jar of Jelly Preserve, top sealed with wax disc and cellophane cover	£1	60	40
138	A plain, clear Jar of Marmalade, top sealed with wax disc and cellophane cover	£1	60	40
139	A plain, clear Jar of Lemon Curd, top sealed with wax disc and cellophane cover	£1	60	40
140	A plain, clear Jar of Chutney, any variety, top sealed with a non-metallic cover	£1	60	40

Recipe – Creaming Method

6 oz (170g) Self Raising Flour – 6oz (170g) Mixed Fruit – Milk/Water

4oz (113g) Castor Sugar – 4oz (113g) Margarine - 2 Eggs

Baking recommended at Gas Reg 4 or Elec. 350F/180C for approx 1 hour

DIVISION I

Entry fee 20p. Per class

All entries must be made and arranged only by ONE PERSON except Classes 158,159 & 160
Exhibits in these Classes must be made and arranged only by the entrant
Any Signature, or other means of identification, must be effectively covered

Class		1st Prize	2nd Prize	3rd Prize
Handicrafts & Arts		p.	p.	p.
141	Handicraft - Knitting - 1 item - hand-knitted garment	£1	60	40
142	Handicraft - Dressmaking - 1 item - Free choice	£1	60	40
143	Handicraft - Cushion - 1 item - Any Medium - Free choice	£1	60	40
144	Handicraft - Soft Toy - 1 item - Free choice	£1	60	40
145	Handicraft - Embroidery - 1 item - Free choice	£1	60	40
146	Handicraft - Cross-Stitch - 1 item - Free choice	£1	60	40
147	Handicraft - Tapestry / Canvas-Work - 1 item - Free choice	£1	60	40
148	Handicraft - Patchwork / Quilting - 1 item - Free choice	£1	60	40
149	Handicraft - Decorative Greeting Card - 1 item - any medium	£1	60	40
150	Handicraft - Woodwork or Metalwork - 1 item - original construction, not kit form	£1	60	40
151	Handicraft - Models - 1 item, any medium	£1	60	40
Art and Photography		1st Prize p.	2nd Prize p.	3rd Prize p.
152	Hand-painted Pebble - maximum dimension no larger than 6 inches (15cm)	£1	60	40
153	Picture - Painting or Drawing, any medium (Note: any Signature to be effectively covered)	£1	60	40
154	Photograph - unframed and unmounted, taken by the Entrant, of "Floods", maximum size 5 ins. x 7 ins. (13cm x 18cm)	£1	60	40
155	Photograph - unframed and unmounted, taken by the Entrant, of "A Friend", Maximum size 5 ins. x 7 ins. (13cm x 18cm)	£1	60	40
156	Photograph - unframed and unmounted, taken by the Entrant, of "Joy", Maximum size 5 ins. x 7 ins. (13cm x 18cm)	£1	60	40
Literature		1st Prize p.	2nd Prize p.	3rd Prize p.
157	Literature - Write the lyrics to a harvest-time song or hymn Entries preferably typed, to be written on one side of A4 paper and submitted on Entry Night. NO name to be written on your entry - a number will be given. If you are submitting your entry at the shop please put it in an envelope with your name on the envelope.	£1	60	40
Group Class		1st Prize p.	2nd Prize p.	3rd Prize p.
158	Collage - theme "Pirates", any medium, on a board No larger than 36 ins. x 24 ins. (90cm x 60cm)	£3	£2	£1
159	A Traditional Scarecrow - Any size, Free Choice	£2	£1	50
160	A Crazy Creation e.g. Onion attached to a spring becomes a Spring Onion.	£2	£1	50

Cups and Trophies

SIR JULIUS SLADDEN CHALLENGE CUP

Presented by Sir Julius Sladden, awarded for the exhibitor with most points in DIVISIONS A, C, D & E

A.C. SPARROW MEMORIAL CUP

Presented by Messrs. F. C. and A. W. Sparrow, awarded for the exhibitor with the most points in DIVISION A

EDGAR OLIVER CUP

Presented by the family of Edgar Oliver, awarded for the exhibitor with the most points in CLASSES 1 to 9 inclusive

IAN SIMMONDS TROPHY

Presented by Sue Simmonds, awarded to the winner of CLASS 66

G. H. STEWART CUP

Presented by Mr. G. H. Stewart, awarded to the exhibitor with the most points in DIVISION C

MARY LESTER MEMORIAL CUP

Presented by Mrs. H. Stewart, awarded to the best exhibit in DIVISION C

C. A. BINYON CUP

Presented jointly by Mr. C. A. Binyon and the Society, awarded to the exhibitor with the most points in DIVISION D

E. M. NORTON TROPHY

Presented by Mr. S. J. Norton, awarded to the exhibitor with the most points in DIVISION E

HONEYBOURNE WINE MAKERS TROPHY

Presented by the Honeybourne Wine Makers, awarded to the best exhibit in CLASSES 132 & 133

A. J. BRAZIER CUP

Presented by A. J. Brazier, awarded to the exhibitor with the most points in CHILDREN'S CLASSES 69 to 74

TED WHEATLEY CUP

Presented by Peggy Wheatley, awarded to the exhibitor with the most points in CHILDREN'S CLASSES 75 to 83

TONY FOWLER CUP

Awarded to the exhibitor with the most points in CHILDREN'S CLASSES 84 to 99

T CUP

Presented by the Boon Family, awarded to the exhibitor with the most points in YOUNG PEOPLE'S CLASSES 100 to 112

RON JONES CUP

Presented by R. V. Jones, awarded to the exhibitor with the best overall exhibit in CLASSES 67 and 68

WINNIE JONES MEMORIAL CUP

Presented by R. V. Jones, awarded to the exhibitor with the most points in DIVISION B

HENRY KING CHALLENGE CUP

Presented by H. W. King, awarded to the exhibitor with the most entries in the show

THE ORIGINAL G H STEWART CUP

Re-Presented by the family of Mr R V Jones and awarded to the exhibitor with the most points in DIVISION H

SEWARD HOUSE TROPHY

Presented by Seward House Nursing Home, awarded to the exhibitor with the most points in the CLASSES 141 to 153

W.HATCH & P.SANDFORD CHALLENGE CUP

Presented by their families, awarded to the exhibitor with the most points in the CLASSES 154, 155 & 156

WILL DALLIMORE LITERATURE COMPETITION CUP

Presented by Will Dallimore, awarded to the winner of CLASS 157

ELLEN EXON CUP

Presented by Sid Norton, awarded to the winner of CLASS 158

.....
POINTS AWARDED - for each Cup/Trophy, shall be

FIRST PRIZE = 3 points SECOND PRIZE = 2 points THIRD PRIZE = 1 point

CLASSES- 38 & 61 shall be - FIRST = 6 points; SECOND = 4 points; THIRD = 2 points
.....

BROMPTON HOUSE

RESIDENTIAL & NURSING HOME.
STATION ROAD, BROADWAY.
WR12 7DE.

24 hour Nursing Care.

En-Suite Rooms.

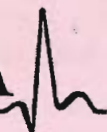
Home Cooked meals by Qualified Chefs.

Full Activity Programme.

Long Stay or Respite Care available
In a Friendly, Caring, Family atmosphere.

Telephone: Amanda Francis _ Home Manager

01386 853473

BUPA 

Care Homes

SPAR



SPAR STORES BADSEY

Sanco Badsey Limited

George Sangha

16 HIGH STREET

BADSEY

EVEESHAM

TEL: 01386 830359

YOUR LOCAL CONVENIENCE STORE

106th ANNUAL

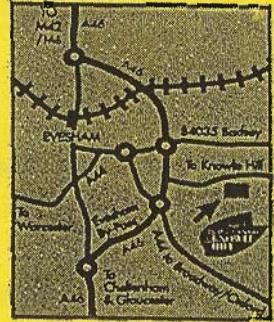


Badsey Flower Show



Tel: 01386 831527 Fax: 01386 832915
www.knowlehill.com

Open Daily: 9.00am - 5.00pm



How to find us:

Follow signs off A46 Evesham Bypass to Knowle Hill, (between A44 to Broadway and B4035 to Badsey) then half a mile on the right.

The Wheatsheaf Inn

Badsey.

Tel 01386 830380

Fully non-smoking Restaurant

Fine Wines and Cask Ales

En-suite Accommodation

Function Room

Benches out front & rear Court Yard

Open all day Friday, Saturday & Sunday

Please call for booking Accomodation or Function Room

A Warm Welcome Awaits You

John Dallimore



Painting and Decorating

- Interior and Exterior
- Wallpapering
- Coving

Free Estimates

Tel No. Evesham 831012



Home Baking
a Speciality



FiesTa Cakes & CaTERERS

of Wickhamford
NR. Evesham

Tel: 01386 834183

Full Catering

Service Available

REFRIGERATED TRAILER
FOR HIRE



Open
7 Days a
Week



Badsey Flower Show

PROGRAMME 2008

2.00pm	Opening of Show- Elizabeth Spencer (Headmistress of Badesy First School)	Marquee Entrance
4.30pm	Prize Presentation	By Marquees
5.00pm	Raffle Draw	By Marquees
5.30pm	CLOSE OF SHOW	

Times may vary- please listen to PA announcements.

PA system kindly provided by Badsey First School

New Bar Gazebos kindly donated by the Co-operative Societ

ARENA 1

2.30pm-3.00pm	Metzo Dance Company
3.00pm- 3.30pm	Cheshire Dog Display Team
3.40pm-4.00pm	Childrens Races
4.00 -4.30	Cheshire Dog Display Team

ARENA 2

1.30pm	Dog Show Registration
2.30pm	Dog Show Judging Commences

BROMPTON HOUSE

RESIDENTIAL & NURSING HOME.
STATION ROAD, BROADWAY.
WR12 7DE.

24 hour Nursing Care.

En-Suite Rooms.

Home Cooked meals by Qualified Chefs.

Full Activity Programme.

Long Stay or Respite Care available
In a Friendly, Caring, Family atmosphere.

Telephone: Amanda Francis _ Home Manager

01386 853473

BUPA 

Care Homes

SPAR



SPAR STORES BADSEY

Sanco Badsey Limited

George Sangha

16 HIGH STREET

BADSEY

EVESHAM

TEL: 01386 830359

YOUR LOCAL CONVENIENCE STORE