



SANTA SPECIAL - BACK ON TRACK RETURN OF CHRISTMAS CHARITY EVENT

Elizabeth and Ralph Bolland are pleased to announce that their annual Christmas charity event will return this November. Following a two year absence due to Covid-19 this popular early evening event is back, bigger and better than ever.

The lockdown has enabled Ralph to upgrade his model railway layout, enabling twice the number of trains running at once with the added bonus of a second model railway to view thanks to Elizabeth and Ralph's neighbour.

This year precautions will be in place to avoid crowded areas. There will be a one-way system in operation using the gardens of both 17 and 19 Binyon Close, Badsey. The viewing of the annual film will take place at the front of no.17, along with refreshments.

This years film, once more created for the event by the Dallimore Brothers, is a short comedy starring Elizabeth and Ralph Bolland along with John Dallimore. Also in the film is Anne McCombie, who takes on the role of a despicable railway inspector, anxious to close the station down.

The money raised from donations will be split between Caring Hands in the Vale and St. James Church, Badsey.



GARDEN MODEL RAILWAY SANTA SPECIALS 2021

Fund Raising Event for Caring Hands in the Vale and Badsey Church

Fun for all the family, an evening of model railways, films and refreshments

FREE ENTRY - MONETARY DONATIONS PLEASE

WEDNESDAY 24TH NOVEMBER
THURSDAY 25TH NOVEMBER
FRIDAY 26TH NOVEMBER

5.30PM TO 7.30PM

at 17 and 19 Binyon Close, Badsey, WR11 7EY

SPAR

**SPAR / POST OFFICE
BADSEY**

01386 830359

In store bakery now available:

- Fresh Bread baked daily
- Breakfast baps
- Rolls/Baguettes
- Hot Food
- Lunchtime request - call us now to place your order

Willesley Provisions - Bacon / cooked meats & cheese

Mon - Fri	6.30am - 8.00pm
Sat	7.00am - 8.00pm
Sun	8.00am - 6.00pm

Kiln & Barn Dried

LOGS

**delivered throughout
Cotswolds and The Vale**

DOMESTIC & COMMERCIAL

Call **Simon or Yvonne**

07801 244 521

01386 832611

littlefarmlogs@icloud.com

gloelectrics

Tom, your local electrician

Fully qualified for all domestic, commercial and testing electrical needs, big and small.

M: 07510 123 438

E: theglo@live.co.uk
www.glo-electrics.co.uk

BADSEY AND ALDINGTON PARISH COUNCIL NEWS

Parish Council Meeting.

The next one is on **Wednesday 17th November** at 7.30pm at Badsey Remembrance Hall.

Public Forum

Before each monthly Parish Council Meeting there is a ten minute slot (7.30pm to 7.40pm) available for parishioners to address the Parish Councillors on matters of interest. It is advisable to contact the Clerk prior to the meeting of your wish to attend so that you will be heard in the time allowed.

Pear Tree Fields Allotments

If you have applied for an allotment you should have received an email by now concerning your application. If you have not please contact the Clerk (details below). There are still a couple of allotments available, if you are interested in applying for one please contact the Clerk.

Clerks's contact details:

Andrea Evans (Mrs),
Ty Gwyn, Church Street, Offenham WR11 8RW.
Mobile: 0759 1533 557
Email: badseyipc@yahoo.co.uk
Website: www.badseyipc.uk

PLANET HUNTING

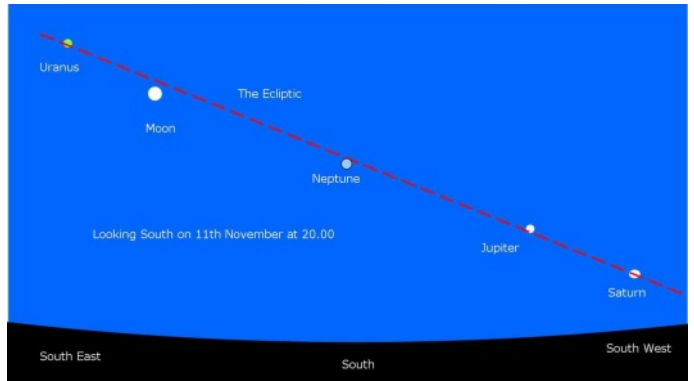
From Badsey's very own astronomer, Stargazer

A long, long time ago, about four and a half billion years to our nearest estimate, a vast cloud of dust and gas stretched across several light years of space. When a shock wave from a nearby exploding star passed through the cloud it began to collapse. As it began to collapse it started to spin, gravity started to pull material together, and near its centre things began to heat up. There now followed a balancing act between the centrifugal forces pushing material outwards, and gravity pulling material towards the centre. As more material was pulled into the centre, the gas and dust in the cloud above and below the centre was irrevocably pulled into the centre as it did not have enough centrifugal force to keep it away. The material that could go into orbit around the centre eventually formed a flat disk.

Gravity pulled the gas particles together and as the gas was compressed it heated up. When the temperature reached about 25 million degrees, nuclear fusion started and a star, our sun, was born. The disk of material surrounding the new star gradually coalesced through collisions into the planets and asteroids that we see today. The result for us is that the sun, moon, planets and asteroids all appear to pass through the same part of the sky known as the ecliptic. The axis of our planet is tilted by about 23.5 degrees to the ecliptic and this gives us our seasons. In the summer the sun is high in the sky, but the ecliptic during the evenings is quite low and any planets are seen through thicker layers of the atmosphere and can therefore be distorted. During the winter though, the sun is lower, but the ecliptic in the night sky will be high, placing any planets into a good position for observation. Thus winter is an excellent time to see planets and this year we can see several.

Mercury moves around the sun every 88 days and is equally a morning or evening object. From the end of November through the whole of December it will be an evening object. Look for a small bright star-like object close to the setting sun.

Venus is also an evening object and appears as a very bright star close to the setting sun right up to the end of the year.



Mars isn't visible in the evenings at present as our relative orbits take it off towards the far side of the sun.

Jupiter is a very bright object in the southern sky during the early evenings at present, and is the jewel of the night sky. Just to the right of Jupiter, also in the southern sky, a little further along the ecliptic is **Saturn**, much further away and smaller than Jupiter. Saturn appears smaller and fainter.

The difficult planet to see this month, and therefore the most fun to find, is **Uranus**. On a good clear night before the moon rises, it is just possible to see Uranus with the naked eye, but it is much better seen through a telescope or with binoculars. Famously first discovered by William Herschel in 1781 Uranus reaches the point known as opposition on November 4th this year, when the earth sits between the planet and the sun. This is the point of closest approach and you should find Uranus due south at midnight on the ecliptic, that invisible line that carries the other planets, the sun and the moon. Give your eyes time to become accustomed to the dark and you will know that it is Uranus that you have found because it has a slightly green tint to its colour.

Neptune is also in a good position at present and was in opposition on September 14th, but you will need a telescope for this one. Seen through a telescope Neptune is a small dot with a slight blue tint.

Although clear evenings can be quite cold at this time of the year, planet hunting can be a very enjoyable and productive way of spending an evening. So put on warm clothes, two pairs of socks, pick up your binoculars or telescope and head for the darkest part of your garden.

JESUS WAS BORN A CHILD JUST LIKE YOU AND ME

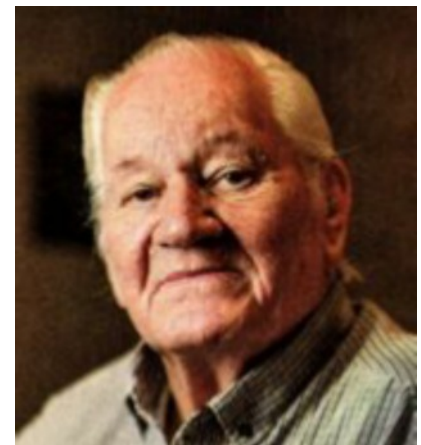
A familiar figure around the village is ninety-year-old Walter Westmacott, known as Wally. Wally has always had the ability to compose a poem or two in his head. However, being dyslexic, a lot of these were never written down. The other day he was in conversation with a parishioner, when Wally mentioned an event from his childhood. Whilst a schoolboy at Merstow Green School he was reciting one of his poems to a friend when a teacher demanded him to stop talking. He explained that he was halfway through reciting a poem and it is criminal not to finish a poem once it had been started. She enquired as to what was so important about this poem. The other boy said it was about the life and death of Jesus. The teacher, holding a cane, was not convinced by his answer and said that if it was so good then he should recite it to the whole class. Which he did.

*Jesus was born a child just like you and me
 And I've no doubt in my mind that was the way God wanted it to be
 And of course he grew up through childhood a carpenter's son
 Again I've no doubt that's the way God wanted it done
 And on reaching manhood, He was preaching God's teachings far and wide
 But in those days there were disbelievers out there that wanted Him crucified
 But even nailed to the cross He still had love in His heart
 For His famous last words if what the Bible says is true
 Was 'Father, forgive them, for they know not what they do.'
 Well of course He died on the cross
 To His followers and believers it was a tremendous loss
 But they still had the spirit of Jesus in both their hearts and mind
 Because when the body goes, the spirit stays behind
 But the spirit of Jesus for some is difficult to find
 And to others it is just a thought at the back of the mind
 But for those who choose to go looking for places to start your search
 Should be a cathedral or a chapel or your local parish church.*

When Wally had finished the teacher said I cannot punish you for a poem that should be in every Bible in the land.



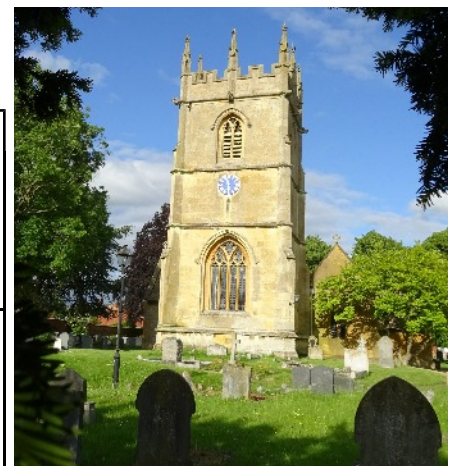
28 NOVEMBER
 4.00pm to 6.00pm
Offenham Church
Free Fun for Families
 Crafts Activities Fun Games
 Free Tea
 Contact pennyanne68@gmail.com



Walter (Wally) Westmacott, moved to Badsey when he was 21. He started his working life in nurseries before ending up as the Steward of the Badsey Royal British Legion Club.

CHURCH SERVICES ACROSS THE BENEFICE - NOVEMBER 2021

Sun 7th Nov	9.30am	Holy Communion	South Littleton
<i>3rd Sunday before Advent</i>	9.30am	Morning Praise	Offenham
	10.30am	Cafe Church	Middle Littleton VH
	11.00am	Holy Communion	Badsey
	6.30pm	Evensong	Cleeve Prior
Sun 14th Nov	10.50am	Remembrance Service	Bretforton
<i>Remembrance Sunday</i>	10.50am	Remembrance Service	Badsey
	10.50am	Remembrance Service	South Littleton
	10.50am	Remembrance Service	Cleeve Prior
	10.50am	Remembrance Service	Offenham
	10.50am	Remembrance Service	North & M. Littleton
Sun 21st Nov	11.00am	Benefice Communion	Cleeve Prior
<i>Christ the King</i>			
Sun 28th Nov	9.30am	Holy Communion (BCP)	North & M. Littleton
<i>1st Sunday of Advent</i>	9.30am	Morning Praise	Offenham
	9.30am	Matins	Cleeve Prior
	11.00am	Holy Communion	Bretforton
	6.30pm	Evensong	Badsey



FROM THE PARISH REGISTERS

Baptisms:

19 Sept Maggie Rose Smith
 26 Sept Arabella June Stanley

Funerals:

21 Sept James Frederick Ives
 (aged 87)

FAMILY HISTORY TIPS

From the Badsey Society



This month we continue our series on how to trace your family history with the first of two articles from Shirley Tutton.

Lesson 10 - Old Photographs (Part 1)

Every person at some time will inherit a collection of family photographs. The lucky ones will inherit photograph albums, beautifully annotated with the date, location and name of every person in each photograph. The less fortunate will inherit albums bearing no distinguishing features whatsoever; the only provenance being the name of the person it belonged to. Then there are the boxes and suitcases full of odd photographs and wallets bearing the names of now defunct photographic laboratories which the majority of us put away under the spare bed to be looked at one mythical rainy day. So, where do you start when trying to identify where and when a photograph was taken, and the identity of those in it? Every photograph contains a lot of clues.

The first question to ask is it black and white or colour? Black and white photography began in the mid 19th century with studio portraits, and by the 1880s box cameras were beginning to become available to the public. Colour photography did not become an affordable replacement until the 1960s. If you have a studio portrait, it often has the name and address of the photographer on the mount, and a quick Internet search will often tell you when they were trading, narrowing the time frame further.

Having roughly ascertained the period of the photograph, the next thing to look at is the costume and hats worn by the subjects. Generally speaking, the earlier the photograph, the fancier the costume, particularly if it is a studio or wedding portrait. People loved to be seen in their Sunday best! Photographs of servicemen can also tell us a great deal,

especially if the details of a cap badge are visible, giving the regiment or vessel in which they served. This valuable information can then be used to search records on Ancestry or Findmypast and records held by individual regiments. The clothes of the working man did not change a great deal right up until the 1960s, so if you are lucky to have photographs depicting people at work, you need to look further for clues, such as any tools and implements that may appear in the picture. Photographs taken outdoors can provide many clues, particularly



if the buildings and landscape are identifiable, either because they are a family home, or contain notable landmarks, either local or national. Vehicles can also help us with further information. Horse drawn vehicles were still around in Britain until after the Second World War, but tractors came into common usage in the early 1900s, and again the Internet can help with identification of specific models to focus in on a rough date. The same applies to any cars.

In our family collection we have a photo of Charles Blaker, Alan's grandfather, the last lamplighter in Southampton, taken for a newspaper article written when he retired in 1964. This photograph illustrates the above points perfectly. He is pictured on his bicycle wearing his suit and flat cap shutting off a gaslight with his pole. In the picture is a steam locomotive (see the funnel), and you can see railway signals and a water tower. In the background is the Rank Hovis McDougall flour mill (identifiable by its shape). This places the photograph in the dock area of the city close to the central railway station and the newspaper offices.

Next month Shirley continues her article with hints on finding out more about family group photographs.

Andy Tyrrell Handyman

From a door that sticks to a kitchen refit, I'm your man.

Many aspects of home maintenance undertaken.

For further enquiries call me on
01386 642945
or 07971086487

The Round of Gras



TAKEAWAY MEALS
Collected or Delivered
SEE WEBSITE FOR DETAILS

OPEN: ALL DAY
www.roundofgras.co.uk
Tel: 01386 830206

Bluebird Care
Care in your home



We provide flexible and bespoke homecare and support services from 30 minute visits to 24 hour live in care. Get in touch today

Call: 01386 764 830

Email: worcesterandwychavon@bluebirdcare.co.uk

bluebirdcare.co.uk/worcester-wychavon

CLASSIC CAR OWNER? JOIN THE CLUB

Local classic car enthusiast Digby Brodrick (Digger) writes.

Walking around the village during those summer months it was hard not to notice emerging from garages and hibernation perhaps, a glorious feast of classic motors.

I'm not aware of any classic car group in Badsey or the surrounding villages so perhaps this is an opportunity to get one such started. I have no preconceived ideas about any make or model or any specific age or type of motors, just a loose group of local enthusiasts with motors in common wishing to meet up every month or so under a Badsey group banner. Given a response of ten or more folks it should be able to sustain itself as a working club/group. If that's for you, please e-mail me on hotelalphacharlie@hotmail.co.uk with your interest and hopefully a meeting of owners could happen very soon in Badsey.

My Life - 1937 Armstrong Siddeley 14 HP as told to its current owner John Waters

I was born in Coventry at the end of November 1937 and delivered to my first owner in Glasgow in December 1937. I spent the war years in Scotland, coming down to London in the 1950's before moving to Wimbledon in 1957. It was there that I experienced serious mechanical problems and was taken off the road, stripped down and left in pieces for the next 50 years. My current owner rescued me in 2010 and I was brought back to life and returned to the roads again in July 2017. Hence my owner now refers to me as "Lazarus". This model was made by Armstrong Siddeley from October 1936 to December 1938.



Jane Neill's Countryside Calendar

The shortening days of November bring storms, fog and frosts but on bright days the low sun casts a beautiful light on the landscape. Decaying vegetation straggles along the edges of the fields, woods and hedges just the brown burr and teasel stand tall. The leaves are mostly gone from the trees but the bareness of the branches exposes a miniature world of yellow and green lichen and mosses. We can now observe the birds as they flit amongst the trees and bushes once hidden by foliage. On rare warm days we may spot the brimstone butterfly, the last to hibernate before winter bites. Bats cease to fly taking refuge in their roosts. Bees, queen wasps and ants are sleeping. The hedgehog and badger hibernate. Colder days bring the birds back into our gardens where food is available. In the fields goldfinches form

large flocks called "charms"; starlings gather in large numbers. The crows, rooks and jackdaws glean the fields together. In the early morning the heron stands for hours in a lonely vigil hunched up against the cold. Jack Frost's touch turns dew into ice that sparkles like jewels until the sun magically melts it away.



The Wheatsheaf Inn



Fish & Chips Now Available

For details visit our website
Call us on the number below
Or call in and enjoy a meal with us

Tel: 01386 830380

www.thewheatsheafinnbadsey.co.uk

TIME PLANNING LEADS QUALITY TRADESPEOPLE REQUIRED FOR LOCAL JOBS

Struggling to get your business to the next level?

Sick of being second to every job?

*Wonder why it's the same companies
who always seem to get there first?*

*Be first to every job, big or small, in your
preferred areas and Council wards.*

Welcome to Time Planning Leads,
the future for your business.

Just text YES to 07769 636240
for more information.



Expert legal services

Taking care of all your
personal and business needs

tbsolicitors.co.uk

Pershore 01386 562000	Tewkesbury 01684 299633
Cheltenham 01242 235250	Stratford-upon-Avon 01789 295544

Badsey Film Club



Luvvies, here are our films for November

Saturday 6th November **Dreamhorse**

Saturday 20th November **Downton Abbey**

Doors Open 7.30pm Film Starts at 8pm

Back Room of the Wheatsheaf Inn, Badsey

New members are always welcome, for further details contact Clive Richards on 832685.

TOWER NEWS St. James Church Bellringers



RINGING ENDORSEMENT FOR OUR OPEN DAY

Well for a first attempt we were highly pleased with the response. Luckily it was a fine day so we had a steady throughput of visitors, from the first at 11.30am to 2.25pm.

We realise that not all will take up the gentle art but it was good to show folks what it is all about. Just as ringers retire from it or move away so we are in a constant effort for new ringers. Many churches have fallen silent through lack of ringers, we won't let that happen here! Bellringing is part of our heritage stretching back over at least five centuries.

Special thanks to Christina, Sarah (pictured below), Andrew, Richard and Bill, all members of our band who helped make the day so enjoyable.

Tom Sandham (Tower Captain)



St James Flower Guild

Thank you ladies and gent for the flowers in church during October and especially for the Harvest Festival the church looked lovely.

November Rota

1st Sunday Yvonne and Jane
2nd Sunday (Remembrance Sunday)
 Hazel and Hazel
3rd Sunday Mary and Alan
4th Sunday No flowers in church
 during Advent

Any queries regarding church flowers please contact Julie Gardner on 832007.

Mothers' UNION

Christian care for families

Our speaker in September was Angela Gray on her life as a teacher. She said she had had a wonderful job.

Our next meeting is in church on Tuesday November 9th at 2.30pm when Ralph Bolland will be the guest speaker. Visitors are always welcome.

If you would like to know more about the Mothers' Union then please contact Sandra Sparrow on 833368.



At our September meeting members were given an interesting talk on Moths and Butterflies by Mr Paddy O'Brian. He showed us many beautiful specimens from all over the world and answered a variety of questions. The talk on Wednesday 10th November at Badsey Remembrance Hall at 7pm will be given by Mrs Joan Bomford from South Littleton who was a Countryfile farming hero winner a few years ago.

Please contact the secretary Alex Owen on 830083 if you would like to join us.

Do you have a question for the history man? If you do, then please send it to the Editor.



Priest in Charge:

Rev. Fr. Philip Morton

The Vicarage, High Street, Badsey, Evesham, WR11 7EJ
Tel. 832599 Email: revphilipmorton@gmail.com

My Surgery is held on alternate Tuesday evenings from 6pm to 8pm at The Vicarage. I use this time to meet and get to know the people who have a desire to book a baptism or wedding at any of the wonderful churches in the Benefice.

We do not have an Administrator at the moment so until a new one is appointed can all enquires be made to the Vicar (details above).

Our Church Website: www.eastvaleavon.com

The Vicar's Day Off is Friday

Churchwardens:

Mrs. Elizabeth Bolland Tel. 830638
Email: lizral.bolland@btinternet.com

Mr. Chris Smith Tel. 830217
Email: smithvce@msn.com

Readers:

Mrs. S. Cole Tel. 831260
Mrs. Margaret Pye Tel. 833537
Mr. Alan & Mrs. Joyce Bache Tel. 839464

Benefice Safeguarding Officer: Lisa Farmer Tel. 40401

Safeguarding Advocate: Elizabeth Spencer Tel. 01789 720078

Useful Contacts

Badsey Remembrance Hall	Sue Brooks	641234
Badsey Community & Sports Club	Sue Evans	830867
Badsey Church Bell Ringers	Tom Sandham	834070
Badsey Church Flower Guild	Julie Gardner	832007

Organisations, Institutes and Societies

The Badsey Society	Shirley Tutton	831539
Women's Institute	Lorraine Goodman	832653
Mothers' Union	Sandra Sparrow	833368

Youth Organisations

1st Badsey Scout Group	Adam Johnson	07510042307
1st Badsey Guides	Mandy Young	423215
Cafe Freedom	Tracy Hemming	830200
Messy Church	Penny Christison	830367

Over 60s Friendship Groups

Sundowners	Val Davies	833423
------------	------------	--------

Sports and Entertainment

Badsey Film Club	Clive Richards	832685
Air Rifle Club	Ashley Green	832296
Archery Club	Ian Trout	831509
Badsey Cricket Club	David Powell	833122
Badsey TaeKwonDo	Marie Hall	0748 478 5882
Model Engineering Club	Roger Cull	831933
Round of Gras Cricket Club	Andrew Ogg	0779 216 2577
Evesham & Badsey Hockey Club	Andy Osborne	0797 068 1505

Out and About

TWO LITTLE DUCKS, HOWZAT! Badsey Cricket Club will be holding their annual Xmas Bingo in the evening of Saturday December 4th at Badsey Sports and Community Centre, Brewers Lane, Badsey. This fundraiser will help the club provide cricket for all ages next summer. If you would like to donate a prize please contact Dave Powell on 833122.

STONE ME! ANOTHER COMPETITION



Where in the parish would you find this work of art. The stone used is blue lias, a hard stone used in many of the older properties in the area.

Send your answer to the Editor, details below.

Last month the missing graphic from the bridleway sign was a bicycle. The correct answer was received from Valerie Magan and Terry Sparrow.

Articles for publication in **COMMUNITY NEWS**

Please contact The Editor (Will Dallimore) on the following email address:

editorbadseycommnews@gmail.com

Handwritten articles are also accepted. Please post them through the door of 30 Horsebridge Avenue, Badsey

Deadline for email or handwritten articles is the 10th of each month



FOR A WIDE RANGE OF PRINTING SERVICES

Tel No. 01386 442004

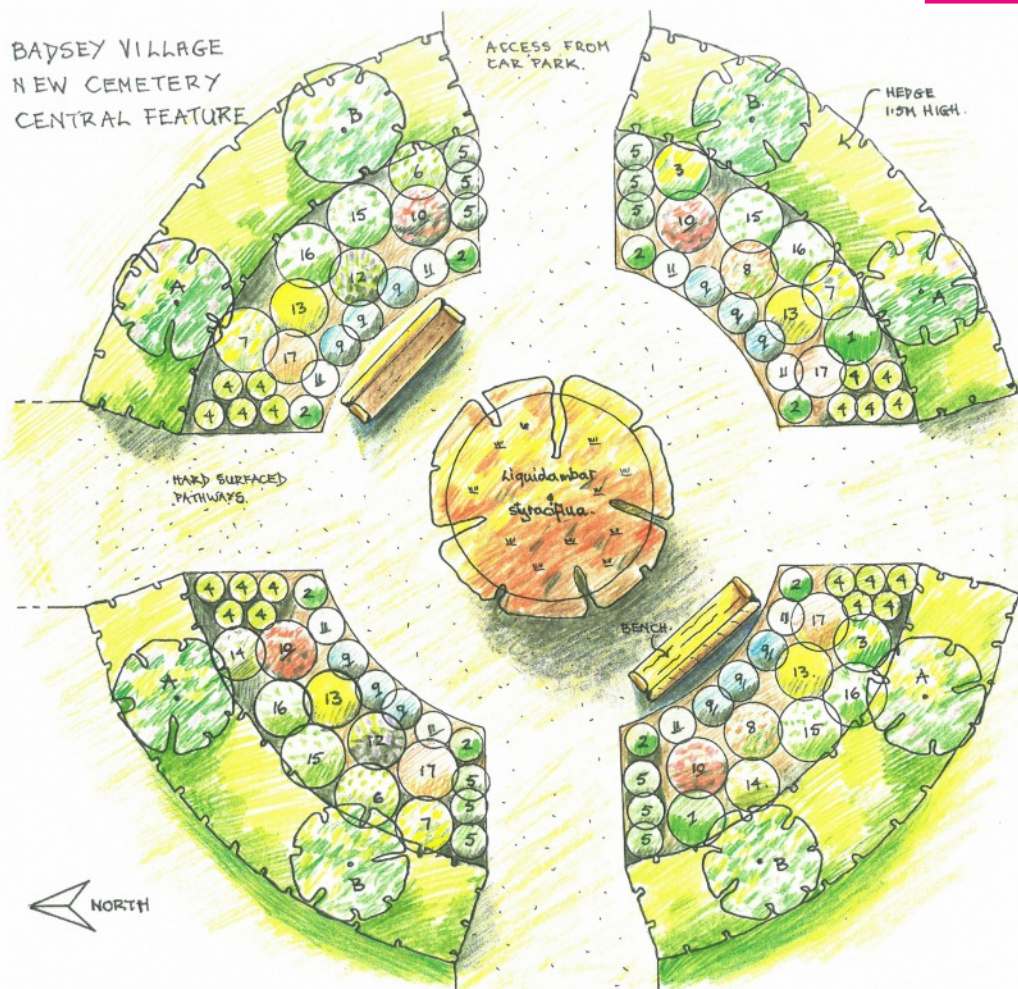
INSIDE CARTRIDGE WORLD, MERSTOW GRN

PEAR TREE FIELDS FOREVER Below is the design of a central feature for the new burial ground at Pear Tree Fields. Lynn Stevens, who was until recently senior parks and open space officer for Wychavon District Council, drew up the design on behalf of the Parish Council and it has been submitted to the Royal Horticultural Society. The drawing has been illustrated by local artist Ian Gibson.

When planted this area will offer a quiet place for visitors to the burial ground to sit. The Pear Tree Fields site will also include a community orchard and allotments.

ST. JAMES CHURCH, BADSEY
EVERY MONDAY TERM TIME
8:45am - 10:00am
DROP IN

FREE CUPPA
TOYS ~ MUSIC ~ BABY CHANGING FACILITIES



- PLANTING:**
- | Species. | No Req. |
|--|---------|
| 1. Sarcococca confusa | (2) |
| 2. Rosmarinus officinalis. | (8) |
| 3. Mahonia aquifolium 'Apollo' | (2) |
| 4. Stipa tenuissima 'Pony Tails.' | (20) |
| 5. Pennisetum alopecuroides 'Hameln' | (12) |
| 6. Osmanthus x burkwoodii. | (2) |
| 7. Rosa 'The Country Parson' | (3) |
| 8. Rosa 'The Fairy' | (2) |
| 9. Nepeta 'Six Hills Giant' | (12) |
| 10. Cotoneaster 'Coral Beauty' | (4) |
| 11. Stachys byzantina 'Silver Carpet' | (8) |
| 12. Buddleia 'Monarch series.' | (2) |
| 13. Forsythia x intermedia 'Mini Gold' | (4) |
| 14. Lonicera fragrantissima | (2) |
| 15. Choisya ternata 'Aztec Pearl' | (4) |
| 16. Philadelphus 'Halanché' | (4) |
| 17. Hylotelephium 'Autumn Joy' | (4) |
| A. Prunus 'Collingwood Ingram' (mtd) | (4) |
| B. Prunus 'shirotae' (White) | (4) |
-  Prunus lusitanicus.
 u u Central Grass Area with naturalised spring flowering bulbs.
 u u Central Grass Area with naturalised spring flowering bulbs.
- SCALE 1:50**
JULY 2021.

WIZPAN
 - Blackminster Business Park -
 ebay selling on commission
 China
 House Clearance
 Collectables & Curios
 All Items Bought & Sold
MARY CAMPBELL
 Email: wizpan1@outlook.com
 Tel: 01386 833894

Diggit
 Man & Digger Hire, Site Clearance
 Concrete Foundations & Bases
 Water & Waste Treatment Tanks
 Landscaping & Slabbing, Driveways
 Planning Applications Specialist
 01386 830626 wenard69@aol.com
 BADSEY
THE GROUND FORCE TEAM


BUZZ
 ELECTRICAL LTD
 We guarantee a professional, reliable and personal service for all your electrical needs.
 For free no obligation quotations, Call 01386 423600
 email info@buzzelectrical.co.uk or visit www.buzzelectrical.co.uk
