



February 2024

At this time of year as a child, I remember hearing many times the first line of an old country rhyme, which said: "February fill the dyke". Of course, it referred to the fact that the month was known for its rainfall. It was also the title of a famous painting by Benjamin Williams Leader which he produced in 1881, showing a flooded landscape.

So far this year with all the excessive rainfall, sadly there has been many dykes and rivers filled to overflowing, causing floods and devastation. But the month of February is also a time of celebration in two special ways. On February 14th we celebrate Valentine's Day, which originally honoured a martyr named Valentine and it became a celebration of romance and love in many regions of the world. Today, it has become a time when we can express our love and adoration for those we love, by sending cards and flowers.

The 14th of February 2024 is also the day to celebrate Ash Wednesday, which is the beginning of Lent in the Christian Church. Lent is the period of 40 days which comes before Easter, and is the period of reflection and preparation before the celebrations of Easter. It replicates Jesus Christ's sacrifice and withdrawal into the desert for 40 days, and this time allows us to stop, think and consider what Christ's life and death really do mean to us in our daily lives now in this troubled world.

Jesus came to show God's love for each one of us.

Revd Ralph Bolland

Have you been affected by breast cancer?

In England, around 47,000 people are diagnosed with breast cancer every year. If you or someone you know has been affected by breast cancer, there are people and communities in place to help.

Penny and Victoria run a small branch of Worcester Breast Unit Support Group. This group offers advice and support for ladies affected by breast cancer in and around the Evesham area. The group will be meeting at the Applebarn Restaurant at Evesham Garden Centre at February 9th at 11am. After that, the group will get together on the second Friday of every month.

For more information, please contact either Victoria at vickiyndon@gmail.com or 07852413570, or Penny at pennyanne68@gmail.com

Kiln & Barn Dried LOGS
 delivered throughout Cotswolds and The Vale
 DOMESTIC & COMMERCIAL
 Call Simon or Yvonne 
 07801 244 521
 01386 832611 **LOGS**
littlefarmlogs@icloud.com

BADSEY COMMUNITY SPORTS CLUB

Opening Hours:
 Mon - Tues closed
 Weds - Thurs from 7pm
 Fri from 6pm
 Sat - Sun from 12pm
 01386 830867

Your not-for-profit local village pub, sports club and event space, with a skittle alley, function room & lounge.

Hire available for:

- Weddings
- Christenings
- Birthdays
- Wakes
- Etc.

POP IN TO YOUR LOCAL

Outdoor facilities/activities:

- Archery
- Children's play area
- Football pitches
- Floodlit training pitch

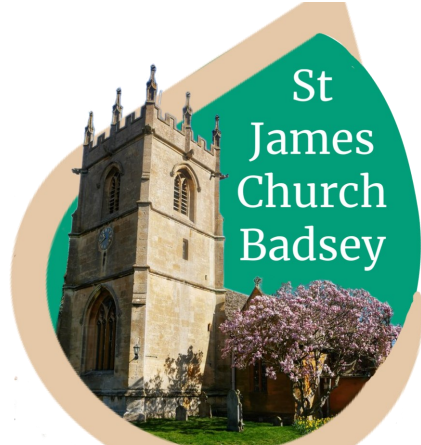
 

BUZZ ELECTRICAL LTD

We guarantee a professional, reliable and personal service for all your electrical needs.

For free no obligation quotations,
 Call 01386 423600
 email info@buzzelectrical.co.uk
 or visit www.buzzelectrical.co.uk





St
James
Church
Badsey

Churchwardens:

Mrs. Elizabeth Bolland MBE

Mr. Chris Smith

Tel. 830638 Email: lizral.bolland@btinternet.com

Tel. 830217 Email: smithvce@msn.com

Readers:

Mrs. Margaret Pye Tel. 833537

Mr. Alan & Mrs. Joyce Bache Tel. 839464

Benefice Safeguarding Officer:

Lisa Farmer Tel. 40401

Administrator

Faith Quinn: eastvaleavon.churches@gmail.com

Safeguarding Advocate:

Elizabeth Spencer Tel. 01789 720078

The Revd. Joanna Fielding - Priest in Charge of the East Vale and Avon Benefice

(Badsey, Bretforton, Offenham, The Littletons & Cleeve Prior)

Jo can be contacted on **07561823135** (WhatsApp & phone) or **01386 339669**,

Email joanna.fielding@hotmail.com

And at The Vicarage, High Street, Badsey, Evesham, WR11 7EJ

Day off is usually Fridays.

Please do get in touch with Jo directly for any enquiries about weddings/baptisms/funerals

Badsey Wednesday Work Group

Meets at Badsey Church between

10.00 and 12.00 on Wednesdays

This is a building and churchyard maintenance volunteer group which meet regularly on Wednesday morning. Everyone welcome to join this sociable and friendly group even if it is just for tea and biscuits.

ST. JAMES CHURCH, BADSEY
EVERY MONDAY TERM TIME
8:45am - 11am
DROP IN

FREE CUPPA
TOYS ~ MUSIC ~ BABY CHANGING FACILITIES

Services this month*

Please see the noticeboard in Church Porch for more services within the Benefice. For more information about any of our churches please visit www.eastvaleavon.com

Please do take the opportunity to share fellowship and enjoy worship in any of the parish churches in our benefice

Date	09:30am Morning Praise	11:00am Eucharist	
4th February 2ND SUNDAY BEFORE LENT	BADSEY	OFFENHAM Eucharist by Extension CLEEVE PRIOR Eucharist	4PM OFFENHAM Christingle
11th February SUNDAY BEFORE LENT	BRETFORTON	SOUTH LITTLETON Eucharist CLEEVE PRIOR Morning Praise	
14th February ASH WEDNESDAY			7PM OFFENHAM Ash Wednesday Eucharist
18th February 1ST SUNDAY OF LENT	OFFENHAM	BADSEY Eucharist CLEEVE PRIOR Matins	
25th February 2ND SUNDAY OF LENT	SOUTH LITTLETON	BRETFORTON Eucharist CLEEVE PRIOR Morning Praise	

Badsey Society

The 2024 AGM of the Badsey Society will take place on **Friday 16th February at 7:30pm at Badsey Community & Sports Club**. The formal business will be followed by the presentation of the Tony Jerram Award. This award is presented each year to a local resident nominated for their contribution to the villages of Badsey, Aldington and Wickhamford by a member of the Society.

After a break for refreshments, there will be two short presentations. Maureen Spinks will talk about Hatches Matches and Dispatches - how local newspaper items can help you find out about your family history. Gill Woods will then talk about the Marriage Banns of Badsey Church.

We look forward to seeing you!



We had a lovely Christmas meeting with food, laughter and a sing-along with Ruby. Now 2024 has been rung in, fireworks have given us oohs and aahs and off we go again. We hope you had a great Christmas and wish you all good health and happiness in the New Year.

We had a members meeting on 10th January, this time to socialise and perhaps play a board game or two - a more relaxed meeting to recover after the busy Christmas period!

The next meeting will be on **14th February at Badsey Remembrance Hall at 7:15pm**. There will be a talk by popular local speaker, Adrian James, about 'Lundy Island, a place on its own'. This small English island in the Bristol Channel is now managed by The National Trust. It has a diverse bird population which is swollen by visiting birds, as the island lies on migration routes.

Our March meeting will be on 14th with the subject of 'BBC local radio'.

If you would like to come, please give our Secretary, Yvonne Haynes, a call on 01386 830063.



Puzzler

Can you find all the love-filled words in the word search below?

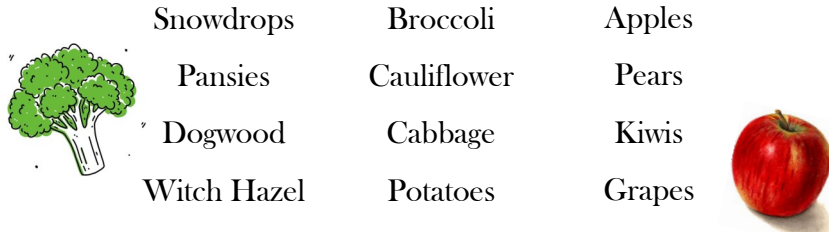
F	L	O	W	E	R	S	L	Q	X	D	A
A	P	X	Z	C	H	I	B	H	S	T	W
Y	B	J	T	O	V	R	S	M	E	L	C
P	S	E	S	S	I	K	W	N	T	J	U
F	E	M	Q	A	D	K	I	F	A	G	P
R	D	U	E	L	K	T	J	B	L	F	I
E	X	C	V	M	N	A	N	V	O	N	D
N	R	Q	O	E	H	C	N	A	C	S	Y
T	K	E	L	W	L	B	U	F	O	C	X
R	H	A	Z	N	O	P	G	D	H	M	K
A	V	P	S	T	J	G	Q	D	C	T	E
P	I	H	S	N	O	I	T	A	L	E	R

Flowers
Chocolates
Relationship
Valentine
Partner
Love
Kisses
Cupid

Get ahead of the competition...

Are you planning on entering one of the Badsey Flower Show's competitions?

There are loads of fruit, flower and vegetable categories to enter - but, if you're looking to get a head start on your planting, here are some flowers, fruits and veggies that can be planted or grown in the winter season!



Computer Club

If you need help or advice with using your computer, why not drop in to one of the computer group sessions run on alternate Monday mornings at 10:30am in the back room of the Wheatsheaf.

Sessions are very informal, and usually consist of a short presentation and then time to chat about individual issues over as much coffee and tea as is necessary. Also, we now have spare laptop computers that you can use during the sessions if you can't bring your own.

Over the next two months we shall meet only on:

Monday 5th February

Monday 19th February

Monday 4th March

Monday 18th March

Each week we will give little hints and tips to help improve you get the best out of your computer and give a little more depth in how to use specific applications. In January we looked at the fundamentals of what you find inside a computer. We will continue in February by examining how to connect to Wi-Fi networks. Everyone is welcome.

For further information, contact Alan Tutton on 01386 831539 or email alantutton@talktalk.net.

Can you support The Round of Gras?

The Round of Gras are gearing up for another exciting year of fundraising for local charities! If you can support by donating raffle prizes, or you have a business and would like to partake in sponsoring an event please get in touch with Laura Penfold on 01386 830 206, or just pop in!



ALAN WILKS SCAFFOLDING

We are a local family run business and guarantee a professional and reliable scaffolding service with over 45 years' experience.

For your free quotation:

 **01386 421782** 
07487 854277

www.alanwilksscaffolding.co.uk

The Wheatsheaf Inn, 29 High Street, Badsey, WR11 7EJ

THE Wheatsheaf INN

Wednesday, Thursday & Sunday pub grub set menu:
Two courses only £17
Or three course for £22

Fish special Friday
Celebrating Cornish & south coast fish

Including... **Walter's at the Wheatsheaf**
Delicious dishes prepared and crafted in house by chef, Peter Zemla

Themed menu event nights
Take away fish 'n' chips (hake)
Private function room for any occasion
Accommodation available
Great selection of beers and ales

01386 830 380  Shown Here



Fancy a Pizza?
Give Badsey Pizza a call...

01386 834 715
TUES - SAT 13:00 - 19:30
Phone orders recommended




01386 830 359

16 High Street
Badsey
WR11 7EW

MON - FRI 06:30 - 20:00
SAT 07:00 - 20:00
SUN 08:00 - 16:00



Bluebird Care
Care in your home

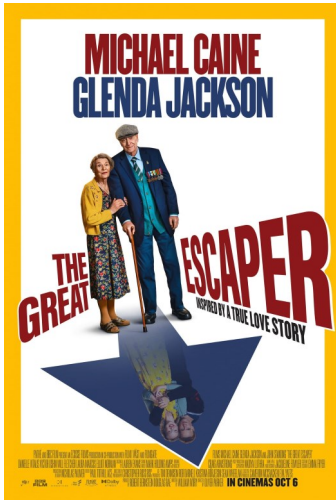
We provide flexible and bespoke homecare and support services from 30 minute visits to 24 hour live in care. Get in touch today

Call: 01386 764 830

Email: worcesterandwychavon@bluebirdcare.co.uk

bluebirdcare.co.uk/worcester-wychavon

Badsey Film Club



The next film will take place on
Saturday 3rd February

We will be showing:

THE GREAT ESCAPER (12a)

The last film for two great British actors Michael Caine and Glenda Jackson. The summer of 2014 was the 70th Anniversary of the D-Day Landings and octogenarian Bernie Jordan (Michael Caine) made global headlines. He'd staged a 'great escape' from his care home to join fellow war veterans on a beach in Normandy, commemorating their fallen comrades. It was a story that captured the imagination of the world.

Bernie seemed to embody the defiant, 'can-do' spirit of a generation that was fast disappearing. The bitter-sweet script explores the reality with wit and a very big heart.

The film starts at 8pm in the backroom of the Wheatsheaf, and we sell ice creams at the mid-film interval.

Date for Your Diary: On 2nd March we will be showing **Mission Impossible: Dead Reckoning**. This film is full of the usual thrills and special effects that you would expect from the earlier movies.

For more information, contact Alan Tutton on 01386 831539

If you would like to be an official member of the Badsey Film Club, it's just £5 per year.

A little bit about Camden Home Nursing

Campden Home Nursing live by one mantra: 'more patients, more care'.

The team at Campden aim to provide high-quality palliative care and emotional support to patients in their last weeks of life. They also pride themselves in caring for the families of these people, and their carers at such a difficult time.

Established in 1990, Campden Home Nursing make sure that they are there for the toughest times in a person's life, and ensure they get the best level of help and support at all times.

Based in Chipping Campden, Campden Home Nursing offer their services to people living in the Gloucestershire, Warwickshire and Worcestershire areas. For more information, contact them on either 01386 840505 or at <https://www.campdenhomenursing.org/>.

John Chalmers
PERSONAL TRAINING

Tailored individual goals, putting you in control

Nutrition advice & plans

Fully qualified & skilled instructor

BRAND NEW Studio Facilities

SUITABLE FOR ALL AGES OF ADULT

07791 370 286

The Round of Gras

TAKEAWAY MEALS
Collected or Delivered
SEE WEBSITE FOR DETAILS

OPEN: ALL DAY
www.roundofgras.co.uk
Tel: 01386 830206

Andy Tyrrell Handyman

From a door that sticks to a kitchen refit, I'm your man.

Many aspects of home maintenance undertaken.

For further enquiries call me on
01386 642945
or 07971086487

GLO ELECTRICS
Your local Evesham Electrician

Contact us for all electrical work, including:

- Internal & External Light Fitting
- Car Charge Equipment EVSE
- Landlord Certificates EICRS
- Garden Building Electrics
- External Sockets
- PAT Testing
- Rewires + Fuseboard Upgrades

07510 123 438
www.gloelectrics.co.uk

The Bright Star, Capella

By Stargazer

This month's stellar object is bright, easy to find in the winter's night sky and very strange indeed.

The star is known as Capella, and is the brightest star in the constellation of Auriga. The name Capella means "nanny goat" or "small female goat." If you find the large constellation of Orion which is almost due south in the evening of the winter's night sky, Capella is the bright star that is above Orion almost at the zenith. It is circumpolar, which means that it can be seen throughout the year, but the winter is the best time to observe Capella because it is high overhead.

An alternative way to find Capella is to look for Vega, one of the bright summer stars that is to the far north at this time of the year. These two stars are on opposite sides of the pole, and at about the same distance from it. An imaginary line between the two stars will nearly pass through Polaris.

Capella is only 44 light years away and is a relatively close neighbour, but it is really interesting because although it appears to be a single star to the naked eye, Capella is four stars organized as two binary pairs and demonstrates several stages in the evolution of stars. The main two stars in the group of four are bright-yellow giant stars, both of which are around 2.5 times as massive as the sun. They are in a very tight circular orbit around each other, that is about three quarters of the distance the earth is from the sun, and they orbit each other every 104 days.

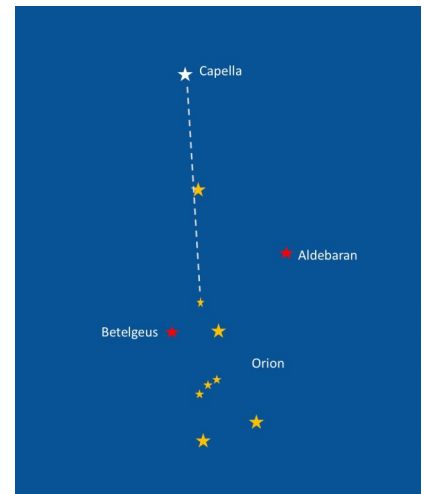
As seen from Earth the pair are not an eclipsing binary, that is neither star passes in front of the other. Both stars have exhausted their core hydrogen, and cooled and expanded, and are both about 75 times as luminous as the Sun and about 10 times the radius. In their cores they are fusing helium into carbon and oxygen and, as they both cool, they will eventually become red giants.

The secondary pair of stars in the four-star system orbit the main pair at about 10,000 times the distance that the earth is from the sun and are two faint, small and relatively cool red dwarfs. They are separated from each other by about twice the distance of the earth from the sun. These two stars orbit each other, and together they orbit the main larger pair of stars about every 300 years.

Capella is estimated to have formed around 590 – 650 million years ago, when the system formed from a cloud or nebula of dust and gas. As the gravitation pulled the gas and dust together, it resulted in the brightest yellow stars that we see today now see. It is unclear whether the red dwarf binary star system formed at exactly the same time, or separately and then somehow ended up being locked into this quadruple star system.

It is highly unlikely that there are any planets within the Cappella system, although planets may well have formed within the early nebula cloud system. Since then, any planets close to the two main stars would have in all probability been burnt up by the growing and expanding proto stars. Any planets remaining would have found themselves within a complex and chaotic gravitational system, and would have been either thrown into one of the stars or found themselves thrown out of the system completely.

So, on a cold crisp clear evening in February, why not try to find the quite magnificent star system of Capella and take a few moments to imagine what a strange complex of stars it really is, and how different to our own lonely sun.



Jane Neill's Nature Notes...

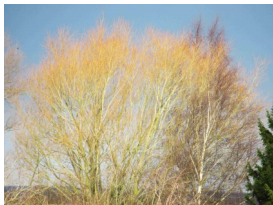
February crosses the divide between winter and spring. It is said that on Valentine's Day (14th) traditionally birds choose their mates for the year. Woodpeckers are one exception, pairing later. Herons return to their heronry if it's not too cold, and trees are not just brown; the sudden bright winter sun highlights the orange trees silhouetted against a blue sky, the purple silver birch, the yellow



low willow and the red arching stems of the bramble. I call it the Hockney effect, after a visit to see David Hockney's exhibition some years ago where he painted his native Yorkshire Wolds in these glorious winter colours.



The horse chestnut sticky buds shine on sunny days too. Catkins hang like lambs tail, and we've had an unexpected visitor to the mill pond- a cormorant! Cormorants are a primitive reptilian-looking bird, black with a white throat and a long yellow beak. It can dive for fish, on which it lives exclusively, for up to a minute - but its feathers are not waterproof. It is often seen sitting on rocks with wings extended drying out.



It was considered a coastal bird until 40 years ago - now, winter brings it to the inland waterways. A delightful unexpected encounter!

Wickhamford Gardening Club

Our January took place on Wednesday 24th, where we welcomed the very popular local speaker Adrian James. He definitely brought a wonderful energy to the Gardening Club to start 2024, and we are looking forward to welcoming members new and old as we progress through the new year.

We are always very happy to welcome new faces and our meeting costs are still very affordable. Yearly memberships have remained the same for many years, at £5.00, with our monthly charge remaining the same for members and visitors at £2.50 & £3.00 respectively.

If you would like to attend one of our sessions or be a part of the Wickhamford Gardening Club, please contact Barbara Bennett at bennett.barbara@sky.com



BHGS

SUPPLYING YOUR GROWING NEEDS

BHGS ARE HERE FOR ALL YOUR GARDENING NEEDS

- Compost & fertiliser
- Seeds & Bulbs
- Tools & equipment
- Bird care
- Clothing & footwear
- Planters, pots & trays
- Irrigation
- Garden furniture

We are open

Mon - Fri: 8am till 5pm Sat: 8.30am till 12pm

BHGS, Vale Park, Evesham, Worcs, WR11 1GP
sales@bhgsltd.co.uk
 01386 444100
bhgsltd.co.uk



BCAR
SERVICE LTD

BCAR SERVICE IS A FAMILY RUN BUSINESS DEALING WITH CAR SERVICE, REPAIR AND DIAGNOSTICS. WE AIM TO OFFER THE BEST LEVEL OF SERVICE AT AFFORDABLE PRICES TO ALL MAKES AND MODELS OF CARS AND LIGHT COMMERCIAL, SPECIALIZING IN BMW.

GENERAL SERVICING
TYRES
ELECTRICS & DIAGNOSTICS

ENTERTAINMENT
AIR CONDITIONING
ECU REMAPPING

01386 834 152 or 07821 714 613

Unit A, Bretforton Road, Badsey, WR11 7XQ
www.bcarservice ltd.com

DiggIt

Man & Digger Hire, Site Clearance
 Concrete Foundations & Bases
 Water & Waste Treatment Tanks
 Landscaping & Slabbing, Driveways
 Planning Applications Specialist

01386 830626
 BADSEY

wenard69@aol.com

THE GROUND FORCE TEAM



Thomson & Banks
SOLICITORS
You matter to us

Expert legal services

Taking care of all your personal and business needs

tbsolicitors.co.uk

Pershore
01386 562000

Tewkesbury
01684 299633

Cheltenham
01242 235250

Stratford-upon-Avon
01789 295544

Badsey & Aldington Parish Council

The Parish Council can be contacted by:

Email **badseypc@yahoo.co.uk**
Phone **07591 533557** (Mon - Thurs 9.30am to 3pm)
Website **www.badseypc.uk**
Post **Ty Gwyn, Church Street, Offenham, WR11 8RW**

Date of next meeting:

Wednesday 21st February / Wednesday 20th March

Meeting starts at 7.30pm in the Remembrance Hall.

Parishioners are welcome to raise matters that they wish to bring to the attention of the PC at the beginning of the meeting. After that, they can stay to observe the meeting



1. How long have you been on the Parish Council?

I started on the Parish Council in 2011.

2. What post on the Parish Council do you hold?

I represent the Aldington ward.

3. What sub-committees are you on?

I'm on the Planning Committee.

4. What's your favourite village event?

I like the Christmas Event, because it brings the entire community together.

✓ HOME OFFICE WORK EMERGENCY

MTS
MOBILE TYRE SERVICES
CAR | VAN | 4X4

GET TYRES TO YOUR DOOR
Fast, convenient & great value
We bring our mobile tyre service to you

➤ Puncture repairs & wheel balancing ➤ Tyre sales & fitting ➤ FREE Tyre health check

01386 834 938 / 07772 927 841

Email: sales@mtstyres.co.uk
www.mtstyres.co.uk

COTSWOLD HOME MAINTENANCE
Men About the House Home Improvements

Providing quality building & property services for over 20 years in the Vale of Evesham and the Cotswolds

FITTED KITCHENS
INTERNAL PAINTWORK
FENCING & GATES
PLUMBING
PLASTERING
ELECTRICAL WORK
HARD LANDSCAPING

Contact Malcolm: **07970 050 495**
01386 831 023
malcolm@cotswoldhomedaintenance.co.uk

Find us on Facebook

REFLEXOLOGY

A deeply relaxing complementary therapy which treats the whole person through the feet or hands. Benefits of reflexology include: Increased Energy, Improved Sleep, Reduced Tension, Relief of Emotional Stress, Relief of Physical Pain and a Feeling of Wellbeing.

Reflexology has been found to be effective in helping women manage both the physical and emotional symptoms of the menopause.

DEBBIE HUMPHRIES BSc(Hons) MAR
Based in Badsey, Debbie is a fully qualified member of the Association of Reflexologists
Website : www.reflexology-badsey.co.uk

To book an appointment please call **0779 562 6344**

FREE SUPPORT FOR BADSEY AND ALDINGTON RESIDENTS

SERIOUS ILLNESS SUPPORT SERVICE
HOSPICE CARE AT HOME SERVICE
BEREAVEMENT COUNSELLING SERVICES

If you have a life limiting illness, are caring for someone who has a life-limiting illness or are recently bereaved, call us now on: 01386 840505.
www.campdenhomenursing.org

5. How long have you lived in the parish of Badsey & Aldington?

I have lived in Aldington for 61 years!

6. Where were you born?

I was born in Evesham, when we still had a maternity unit!

7. What's your favourite meal?

I would say a tender, medium-rare fillet steak.

8. What's your favourite holiday destination?

I travel to Spain every year with the family which is great, but I would say that my favourite trip is our drag racing trips to the USA.

9. How would you describe your music taste?

I do like most type of music, but I would say Heavy Metal is my passion.

10. What's your claim to fame?

I have been drag racing motorcycles on and off for the past 30 years doing the riding and mechanical side of things. But my son and daughter have now taken over the competitive racing side and have both won national championships in their clas-

This magazine is printed by

Zimprint

info@zim-print.co.uk
01386 442 004
6 Merstow Green, Evesham, WR11 4BD

national championships in their clas-