



# BADSEY *and* ALDINGTON

## COMMUNITY NEWS

Part of the Benefice of East Vale & Avon Villages

JANUARY 2026

### NOTES IN THE MARGINS OF LIFE

People who have come to share a meal with us often notice the collection of cookery books in the dining room. I don't use them as often as I used to, as it is often quicker just to look something up on the internet. But sometimes I will sit down with one of my books and plan a special meal. Some of them are older than me - they were bought by my aunt Alison, who was a brilliant cook (and threw some legendary parties in 1960s Bristol).

When I look through her recipes, I sometimes see notes scribbled in pencil where she had adjusted quantities or substituted ingredients, or spot a scrap of paper with the shopping list of ingredients doing duty as a page marker. The newer books are mine, but I have continued with Alison's habit of adding notes here and there. Next to some of the recipes, I can read my notes - often from years ago, when our children were little - or from when we were living in New Zealand. The notes remind me of which recipes worked brilliantly (or the occasional disaster), of special occasions celebrating a birthday, a graduation, or the first proper meal in a new home. There is a record of an amazing dessert made with apricots bought on our way home from a holiday, and that David's parents were with us to share it.

The notes I made help me remember those times - but also shaped how I felt - about whether I wanted to repeat the recipe (or not), or try again with variations.

The older I get, the less patience I have with New Year's resolutions - but there is a practice that I have at the end of each day, and especially at the end of each year, which is reviewing and evaluating the past in order to help me do better in the future. I find it immensely helpful within my faith journey, but it works in a similar way if you have any faith or none.

Within Christianity, it is known as the Examen, and was developed by an ex-soldier, Ignatius of Loyola, who became a revered Christian teacher. One version is:

1. Become aware of God's presence.
2. Review the day with gratitude.
3. Pay attention to your emotions.
4. Choose one feature of the day and pray from it.
5. Look toward tomorrow.

In the first few days of this New Year, my third here with you all in our Vale, I look back over the previous 12 months, aware of God's presence with me, with us. My diary reminds me of what has taken place, like weddings, funerals, christenings and special community events in our schools and village gatherings, and the day-to-day things like meetings, chats in the shop or walking along with someone. I take some time to look back over it all.

Firstly, I give thanks for all that it taught me. Then, I ask myself some questions. What went well? What would I do differently next time? What needs to stay the same? Where did I see God's spirit moving and at work? What gives me encouragement and hope for tomorrow? What do I want/need to carry with me into this next year?

The process takes a bit longer than a scribbled note in the margin of a recipe book - but when I do it with honesty and persistence, it has helped me see things about my past self, good bits and the parts I still need to work on - and shows me a better and more hopeful path ahead. You might like to try a version of it for yourself - and if you do, I'd love to hear how it went.

God bless you in all that you hope and plan for in 2026.

Jo Fielding      [Revjo.eastvale@gmail.com](mailto:Revjo.eastvale@gmail.com) | 07561823135

**Fit and Finish**

**Kitchens and Bathrooms  
Complete Project  
Supply and Fit  
Fit only**

Contact Simon: 07736 772 758  
[fitandfinishkitchens@outlook.com](mailto:fitandfinishkitchens@outlook.com)

**BADSEY COMMUNITY SPORTS CLUB**

**Opening Hours:**  
 Mon - Tues closed  
 Weds - Thurs from 7pm  
 Fri from 6pm  
 Sat - Sun from 12pm  
**01386 830867**

Your not-for-profit local village pub, sports club and event space, with a skittle alley, function room & lounge.

Hire available for:

- Weddings
- Christenings
- Birthdays
- Wakes
- Etc.

**POP IN TO YOUR LOCAL**

Outdoor facilities/activities:

- Archery
- Children's play area
- Football pitches
- Floodlit training pitch

sky sports      BT SPORT

**BUZZ ELECTRICAL LTD**

We guarantee a professional, reliable and personal service for all your electrical needs.

For free no obligation quotations, Call 01386 423600  
 email [info@buzzelectrical.co.uk](mailto:info@buzzelectrical.co.uk)  
 or visit [www.buzzelectrical.co.uk](http://www.buzzelectrical.co.uk)

APPROVED CONTRACTOR



**St  
James  
Church  
Badsey**

**Churchwardens:**

**Mrs. Elizabeth Bolland MBE**

**Mr. Chris Smith**

**Readers:**

**Benefice Safeguarding Officer:**

**Administrator**

Tel. 830638 Email: bollandelizabeth22@gmail.com

Tel. 830217 Email: smithvce@msn.com

Mrs. Margaret Pye Tel. 833537

Lisa Farmer Tel. 40401

Faith Quinn: eastvaleavon.churches@gmail.com

**The Revd. Joanna Fielding - Priest in Charge of the East Vale and Avon Benefice**  
(Badsey, Bretforton, Offenham, The Littletons & Cleeve Prior)

Jo can be contacted on 07561823135 (WhatsApp & phone) or 01386 339669,  
email joanna.fielding@hotmail.com And at The Vicarage, High Street, Badsey, Evesham, WR11 7EJ

Day off is usually Fridays.

**Please contact the Benefice Administrator Faith Quinn**  
(details above) for  
**all enquiries about Baptisms, Weddings, and Funerals**



**East Vale and Avon  
Benefice**

Services for January 2026			
	9.30am	11am	Other Services
<b>4th January Epiphany</b>		Offenham <b>Benefice Eucharist</b> The Very Rev'd Mark Badger, Archdeacon	
<b>11th January 1<sup>st</sup> Sunday After Epiphany</b>	Bretforton Eucharist	South Littleton Eucharist	7pm Badsey Taizé
<b>18th January 2nd Sunday After Epiphany</b>	Offenham Morning Praise	Badsey Eucharist  Cleeve Prior Eucharist	4pm Bretforton Messy Church
<b>25th January 3rd Sunday After Epiphany</b>	South Littleton Morning Praise	Bretforton Eucharist	

**ST. JAMES CHURCH, BADSEY**  
**EVERY MONDAY TERM TIME**  
8:45am - 11am  
**DROP IN**  
  
**FREE CUPPA**  
**TOYS ~ MUSIC ~ BABY CHANGING FACILITIES**

Special Services NOVEMBER 2025						
	Badsey	Bretforton	Offenham	South Littleton	North and Middle Littleton	Cleeve Prior
<b>Baptisms</b>		Hawthorne Shipman-Toon	Ralph Horne			
<b>Weddings</b>	Brad Smith and Gabrielle Evans					
<b>Funerals or committal of ashes</b>		Gillian Ramm		Judith Parsons Lorna Howarth	John Blower	Laura Lupton



**18 January**  
**4.00pm to 6.00pm**  
**Barn at The Fleece  
Bretforton**  
**Free Fun for Families**  
Crafts Activities Fun Games  
**Free Tea**  
Please book for catering purposes  
Contact pennyanne68@gmail.com 01386830367

**Regular Events**

**First Sunday of the Month Time for Tea 2.30pm to 4.00pm St. Mary & Milburgh Offenham:** Come and join for tea and cakes.

**Mondays in term time 8.45am to 11.00 am Drop In at St. James Church Badsey:** Primarily for adults with pre-school children. Free cuppa toys music and a chance to chat

**Wednesdays 10.00 to 12.00 Gardening Group St. James Badsey:** Join us for churchyard maintenance or just for a chat and a cuppa and a biscuit

**First and Third Wednesdays of the month 10 to 12 Basement Cleeve Village Hall:** Tea and cakes and time to chat all welcome

**First Thursday of each month Coffee Morning St. James Church Badsey:** Come and join us for a cuppa and a chat

**Knit and Nat:** for times and venue, Nina Ward 01386 830399

Evesham Live Present   
**Avonbank Brass Band  
Spring Concert**  
National Brass Band Championship Finalists 2025  
  
Evesham Town Hall  
March 22nd 2026  
3pm   
Scan Me   
Tickets £11 Inc  
Www.eveshamlive.co.uk  
Or Johnson's, 91 High St. Evesham  
Evesham Arts Association Reg Charity No 505575

# Church Announcements

## THANK YOU TO OUR DELIVERERS!

As a new year begins, we want to thank those who have been a constant source of support to us at the Community News - our deliverers!

Several parish residents give up their time every month to put your magazine through your door. All year round, rain or shine, we know we can rely on these important people to help us get your local news to you.

We'd like to extend a heartfelt thank you to everyone who ensures our magazines are delivered on time every month - you're all the real heroes here, and your work is greatly appreciated!

## DING DONG MERRILY ON HIGH

At long last, the church clock is working again! Since the refurbishment of the strike mechanism at the beginning of 2025, there has been a couple of unrelated faults that have stopped the clock. The delays in getting the repairs done have been exacerbated by the company we use having illness and an increase in call outs to faults caused by the very hot summer.

Hopefully, now, these problems have been solved.

## AVONBANK CHRISTMAS CONCERT

On Friday 5th December we hosted our annual Avonbank Brass Band Concert. Over 90 of us gathered in St James Church and enjoyed possibly the best Christmas Concert we have ever had! Our vicar, Rev. Joanna Fielding, welcomed the audience and band under the direction of their wonderful band leader, Micah Parsons. He introduced each piece of music and gave us an insight of the providence of the music and also to the foibles of the various groups of instruments, and how the best instruments by far were the euphoniums and the most disobedient were probably the trombones.

Silly Christmas hats were donned and we were treated to our favourite Christmas carols and pieces such as "Glow" by Eric Whitacre, "Murder on the Dance Floor" by Sophie Ellis-Bextor and an energetic "Schneewaltzer" by Goff Richards.

If you missed the concert or would like to watch the highlights again they can be found here:

<https://www.youtube.com/watch?v=LDIB2nuzbb8>

We would like to say a terrific thank you to the Avonbank Band and to Micah, and to all who helped arrange the evening and especially to all who came along. **Your efforts raised a marvellous £550** which will be split between St James Church and two charities, Campden Home Nursing and Friends of the Holy Land.



## SUCCESS FOR BADSEY'S ANNUAL CHRISTMAS EVENT

2025's Christmas Event was nothing short of magical! From craft stalls to carol singing to real-life reindeer, there was something for everyone to enjoy. Plus, despite a slight chill in the air, the weather was kind to us.

Santa even made time in his busy schedule to pay our locals a visit!

**We'd like to say a massive thank you to everyone who gave up their time to help make the event a success for yet another year - we're looking forward to seeing the tradition continued in 2026!**

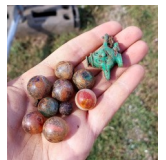


## EXCAVATING MILESTONE GROUND, BROADWAY:

### A TALK BY JAMIE WILKINS

Friday 16th January 2026 at 7:30pm  
at Badsey Community & Sports Club

Join Jamie, Archaeological Project Officer for Explore the Past, to hear the story of an exciting excavation which traces the habitation of Broadway from prehistoric times, through Roman settlement, into the time of the Anglo-Saxons.



Jamie's enthusiasm for the dig and what it has revealed so far is tremendous. Milestone Ground is important both in terms of Worcestershire and nationally, and its finds will be part of archaeological research for some years to come.

**Free to Badsey Society members, £2.50 for non-members.**

## COTSWOLD GARDEN DESIGNER

- Looking to improve your outside space but stuck for ideas on how to make the most of it?
- Want somewhere to entertain?
- A space for your children to play?
- Or maybe you just need a quiet place to relax, a calming, scented corner, just for you?

I can provide a full garden design, planting plans or a simple garden report - some ideas of how you could best use your outdoor space and the types of plants that you like and would suit the environment.

CONTACT LORRAINE  
lorraine@cotswoldgardendesigner.co.uk  
07516262560  
www.cotswoldgardendesigner.co.uk

## The Round of Gras

TAKEAWAY MEALS  
Collected or Delivered  
SEE WEBSITE FOR DETAILS

OPEN: ALL DAY  
www.roundofgras.co.uk  
Tel: 01386 830206

Fancy a Pizza?

Give Badsey Pizza a call...

01386 834 715

TUES - SAT 13:00 - 19:30  
Phone orders recommended

01386 830 359

16 High Street  
Badsey  
WR11 7EW

01386 830 359

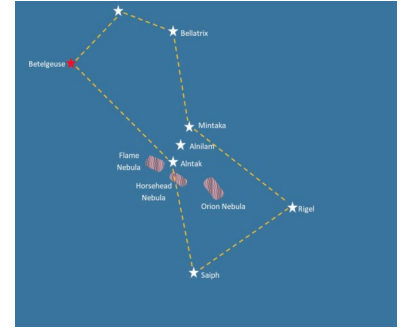
16 High Street  
Badsey  
WR11 7EW

MON - FRI 06:30 - 20:00  
SAT 07:00 - 20:00  
SUN 08:00 - 16:00

## ORION'S BELT

By Stargazer

Following on from last month's Stargazer, we will continue to look at the most spectacular of the winter's constellations, Orion. This magnificent constellation rises in the east at around sunset and is well-positioned high in the southern sky in the late evening. Across the centre of the constellation, there are three stars roughly in a line that form the area known as Orion's Belt. These three bright stars, from left to right, are known as Alnitak, Alnilam, and Mintaka.



Alnitak is the easternmost star in Orion's Belt. It is not just one star, but consists of the main star and two partners, and is approximately 1,260 light-years from Earth. The primary star, Alnitak Aa, is a hot blue supergiant and is extremely luminous - about 100,000 times brighter than our Sun with a surface temperature exceeding 30,000 Kelvin. The system also contains Alnitak A and Alnitak B, both of which are hot, massive stars in their own right. Alnitak's luminosity and energy output make it a major source of ionisation for the interstellar gas in its vicinity, contributing to the illumination of nearby nebulae, such as the Flame Nebula. This star, being relatively young (only a few million years old) is destined for a dramatic end, as a supernova in only a few more million years. Alnilam is the central star of the Belt, and is located approximately 2,000 light-years from Earth, making it the most distant of the three and the only single star in the group. This massive blue-white supergiant shines with a luminosity nearly 375,000 times that of the Sun and has a surface temperature around 27,000 Kelvin. Its mass is estimated to be about 40 times that of the Sun, and it is losing mass rapidly through a powerful stellar wind. Alnilam's brilliance is due to its immense size and energy production. Like Alnitak, it is relatively young and will also eventually explode as a supernova.

Mintaka is the westernmost star in the Belt and is about 1,200 light-years away from Earth. It is also a multiple-star system, with the primary component, Mintaka A, being a binary system composed of two massive blue stars. The combined luminosity of Mintaka's components is roughly 90,000 times that of the Sun, and their surface temperatures exceed 30,000 Kelvin. The system's components orbit each other with a period of about 5.7 days, and the gravitational interactions between them generate strong stellar winds and X-ray emissions.

Surrounding the belt stars is a region rich in interstellar gas and dust, giving rise to some of the most spectacular nebulae observable from Earth. These nebulous clouds are sites of star formation, stellar death, and complex interactions between radiation and matter. The most notable among them are the Orion Nebula, the Horsehead Nebula, and the Flame Nebula.

Located south of Orion's Belt, the Orion Nebula is one of the brightest and nearest regions of active star formation, lying approximately 1,344 light-years from Earth. Spanning about 24 light-years across, it is visible to the naked eye as a fuzzy patch below the Belt, forming part of Orion's "sword." The nebula is a vast cloud of ionised hydrogen, where hundreds of young, hot stars are being born. At the heart of the Orion Nebula lies the Trapezium Cluster, a group of massive young stars whose intense ultraviolet radiation illuminates and shapes the surrounding gas. The nebula's intricate structure, with pillars, jets, and dark dust lanes, has been studied extensively. The Orion Nebula offers astronomers a laboratory for understanding the processes of stellar birth and the evolution of planetary systems.

The Horsehead Nebula is a small, dark nebula located just south of Alnitak, the easternmost star in Orion's Belt, and lies about 1,375 light-years from Earth. The nebula's distinctive shape, resembling a horse's head, is created by a dense cloud of cold gas and dust silhouetted against the brighter background of illuminated gases. Unfortunately, it is relatively faint and requires a telescope to observe in detail.

Tranquillity and calm

www.theholisticlady.co.uk  
07554 544013

CONTACT VICTORIA, LOCATED IN BLACKMINSTER  
HOLISTIC TREATMENTS. GIVE YOURSELF THAT QUALITY  
'ME TIME'  
REIKI, REFLEXOLOGY, HOT STONE MASSAGE  
SOUND THERAPY

BCAR SERVICE LTD

BCAR SERVICE IS A FAMILY RUN BUSINESS DEALING WITH CAR SERVICE, REPAIR AND DIAGNOSTICS. WE AIM TO OFFER THE BEST LEVEL OF SERVICE AT AFFORDABLE PRICES TO ALL MAKES AND MODELS OF CARS AND LIGHT COMMERCIAL, SPECIALIZING IN BMW.

GENERAL SERVICING  
TYRES  
ELECTRICS & DIAGNOSTICS

ENTERTAINMENT  
AIR CONDITIONING  
ECU REMAPPING

01386 834 152 or 07821 714 613  
Unit A, Bretforton Road, Badsey, WR11 7XQ  
www.bcarserviceltd.com



## MERRY CHRISTMAS AND A HAPPY NEW YEAR FROM THE BADSEY BELLES!

We kicked off the festive season in style at our December meeting, making our own festive table decorations. We were fuelled by some delicious mulled wine and homemade mince pies - a real treat!



At the time of writing, we are looking forward to our members' Christmas dinner at the Round of Gras - it should be a lovely and merry evening to celebrate what has been a fabulous year for our WI.



Our next meeting will be at **7:30pm on 7th January** at the Remembrance Hall, when we will be hearing from local artist, Hayley Reynolds, about her work, and she will be demonstrating some of her techniques. All women over 18 are welcome, and tickets for visitors will be £5 (cash paid on the door).

If you would like to attend a meeting or find out more about our WI, please contact our secretary, Lucy, at [badseybellessec@wfedwi.org.uk](mailto:badseybellessec@wfedwi.org.uk) or visit us on Facebook or Instagram.

Your local Evesham Electrician

Contact us for all electrical work, including:

- Internal & External Light Fitting
- Car Charge Equipment EVSE
- Landlord Certificates EICRS
- Garden Building Electrics
- External Sockets
- PAT Testing
- Rewires + Fuseboard Upgrades

07510 123 438  
www.gloelectrics.co.uk

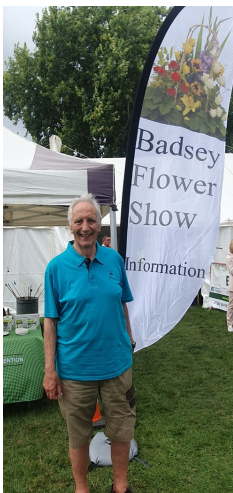
## ADVERTISE YOUR BUSINESS WITH US!

Less than 2p gets your business through the doors of Badsey and Aldington!

Would you like more customers on your doorstep?

If so, an advert in the CN is ideal. Over 1300 copies are posted each month!

Phone Ian Devine on 07779091340 to arrange your space.



## **GORDON BOON: 45 YEARS AT THE HEART OF THE FLOWER SHOW**

The Badsey Flower Show is saying goodbye to Gordon Boon as he retires following 45 years on the committee, both as a member and as Chair!

Here's what he had to say about his time with the Flower Show:

*"All good things come to an end,' or so Chaucer said. The time has come for me to retire from the Badsey Flower Show. I started with the Show in 1980, helping to collect the equipment which was stored in the loft of the LGB at Blackminster. Those were the days of being younger and fitter! Over the years, as both a Committee Member and Chairman of the Show, it has continued to provide a wonderful event for the village. The Show is one of the longest-running shows of its kind in the UK, and I am very proud to have been a part of it. I wish everyone involved with the Show going forward every success and to have as much enjoyment as I have had. The work of the committee and the many helpers will, I am sure, ensure the continued success of the Show."*

We'd like to thank Gordon for his decades of incredible work, and can't wait to see him out and about enjoying his well-earned retirement!

## **JOIN US FOR A DAY AT THE HOUSES OF PARLIAMENT**

**Wednesday 11 March 2026**

We are very excited to announce that our next trip will be to the Houses of Parliament. This is the week after Nigel Huddleston MP will be giving our annual Richard Phillips memorial lecture on the subject of Parliament, so perfect timing!

We will be leaving Badsey at 7am and returning for 7:30pm. It will be a long day, but definitely worth it. Places are limited to 50 people for the tour of the Houses of Parliament. The exact cost of the coach will be between £20 and £40 per person, depending on how many people wish to come along, **and will be fixed at the closing date of Friday 9th January 2026.** If you would like to come along, could you please pay a deposit of £10 to secure your place by this date.

The tour of the Houses of Parliament will take place in the morning. If you would like to have a group tour of Westminster Abbey in the afternoon, the cost will be an additional £25 a head. If there is sufficient interest, this will be organised for the afternoon.

There are also a number of other places of interest in the locality to visit after lunch, such as the Jewel Tower, which is free to English Heritage members, and £5.50 to non-members.

If you would like to spend the day at your leisure, the cost of coach travel alone will be as above, and a £10 deposit is also required.

Please contact Shirley Tutton on 07740 286941 or [shirleytutton@talktalk.net](mailto:shirleytutton@talktalk.net) for further information or to book a place.

Badsey Society members will automatically receive a registration form.

We look forward to seeing you!

*The Badsey Society organises three trips each year. These are open to non-members as well as members, and we try to choose places that appeal to all interests. So, if you would like to know more, keep an eye on the Community News, or contact Shirley Tutton on 07740 286941 or [shirleytutton@talktalk.net](mailto:shirleytutton@talktalk.net).*

## **COMPUTER CLUB**

If you feel that you wouldn't know how to start with a computer or are afraid to use it in case you break it, why not come along to one of our computer group sessions?

The Badsey Computer Group aims to give a helping hand to anyone who seeks to gain confidence in using their computer.

Sessions are very informal, usually with a short discussion of a chosen topic and then plenty of time to answer individual issues. Sessions take place on alternate **Mondays in the back room of The Wheatsheaf, starting at 10:30 am and lasting about an hour and a half.**

The topics we look at come from questions from those attending. During January, we will look at the basics of what happens when you switch on your computer and how to get the most from your laptop.

**In January, we will meet on:**

- **Monday 12th**
- **Monday 26th**

The computer group is open to all at no charge. Sessions are very informal, starting with a chat about a single topic and then an opportunity to ask individual questions.

Everyone is welcome, and the coffee is free! For further information, contact Alan Tutton on 01386 831539 or email [alantutton@talktalk.net](mailto:alantutton@talktalk.net).

## Supporting people to live life on their terms.

Safehands Healthcare provides care and support to individuals in their own home. Local and independently owned, we support a diverse range of complex care needs for children and adults.

Professional and friendly team

24/7

A full range of complex care needs supported

Person centred care packages

Fully trained care staff

01242 383773  
hello@safehandshcare.co.uk  
www.safehandshcare.co.uk

### Now is the time to upgrade your property!

- Driveways
- Landscaping
- Patios
- Groundworks
- Decking
- Pergolas
- Artificial lawns

We have been established and have worked in the area for over 25 years!

Your Local Contractors

Wishing all Past, Present and Future clients a happy Christmas and prosperous new year!

Call Kelvin or Steve for a free Quote!

07973361143  
01386 830626

Wenard69@aol.com

## REFLEXOLOGY

A deeply relaxing complementary therapy which treats the whole person through the feet or hands. Benefits of reflexology include: Increased Energy, Improved Sleep, Reduced Tension, Relief of Emotional Stress, Relief of Physical Pain and a Feeling of Wellbeing.

*Reflexology has been found to be effective in helping women manage both the physical and emotional symptoms of the menopause.*

DEBBIE HUMPHRIES BSc(Hons) MAR

Based in Badsey, Debbie is a fully qualified member of the Association of Reflexologists

Website : [www.reflexology-badsey.co.uk](http://www.reflexology-badsey.co.uk)

To book an appointment please call  
0779 562 6344

## ASK THE HISTORY MAN: Badsey Shops (Part One)

Here in Badsey, we are fortunate to have an excellent village shop offering a wide range of goods, as well as a very nice butcher's shop next door.

### **But what shops did Badsey have 50, 100, or 150 years ago?**

An early reference to a shop here may be found in the 1861 census, where Mrs Sarah Maria Taylor is described as 'grocer', at what is now the Wheatsheaf Inn, although it was not then a public house. So, possibly, she was Badsey's first shopkeeper.

Some time during the 1860s, Sarah, together with her husband, Joseph, a saddler and harness maker, moved to the Royal Oak (now the Round of Gras), where he took over from Richard Ingles as landlord.

Sarah's successor at the shop was Mrs Fanny Wright, a widow, originally from North Littleton. The 1871 census describes her simply as 'grocer', but two years later, Littlebury's Worcestershire Directory tells us that by then she was a 'beer retailer and shopkeeper'. So, the Wheatsheaf Inn was born, competing for trade with the Bell Inn just around the corner, which had been established at least 20 years earlier.

Towards the end of the century, with Badsey's population rapidly increasing, other grocers' shops appeared. There was Mrs Jane Jinks in the Green Road (now Chapel Street), and Mrs Eliza Knight in the building where the Spar shop is located today. Then, there was James Brewer, who in 1897 commenced business as a baker, with a grocer's shop attached, at what is now 12-14 Brewers Lane. He had previously been employed at John Cull's bakery at the rear of 18 High Street.

In 1895, both Fanny Wright and Eliza Knight were summoned to appear at Evesham Magistrates' Court to answer charges of selling adulterated goods at their respective shops - in Fanny's case, coffee containing 40% of chicory, and in Eliza's case, butter which was in fact 80% foreign fat! The Magistrates found both cases proved, and the ladies were fined £1 each.

Mrs Wright appears to have closed her shop quite soon afterwards, possibly when she sold the premises to Flowers Brewery on 1st January 1896. She died in 1899. Meanwhile, Tom Marshall had arrived as the new landlord of the Wheatsheaf Inn.

To be continued...

*If you have a question you would like Badsey's History Man to answer or a topic you would like him to write about, please let us know by emailing us at [badseycn@gmail.com](mailto:badseycn@gmail.com), and we will pass your request on.*

## RINGING IN THE NEW YEAR

On Thursday, 4th December, 27 members and villagers set out to visit Gloucester Cathedral and the city. On arrival, 23 of us walked the short distance to the Cathedral, where we were welcomed with coffee and homemade cookies before splitting into two groups for tours of the cathedral and the crypt. The other four left us to explore the city by themselves.

The guides, without reference to any notes at all, told us all about the history of the Cathedral, from its origin as a twin minster founded in Saxon times by King Osric, King of the Hwicce in 679, and whose sister Kyneburge was the first abbess, to its transition to a Benedictine monastery in the 11th century, and then to an abbey in Norman times.

William the Conqueror held his Christmas Court in the Chapter House in 1085, and his son, Robert, is buried at Gloucester, commemorated by a magnificent effigy carved in bog oak about 100 years after he died in 1134.

The royal connection continued with the coronation of Henry III in 1216 after the death of his father, King John of Magna Carta fame, and just over 100 years later, in 1327, Edward II was buried at Gloucester after his mysterious murder at nearby Berkeley Castle.

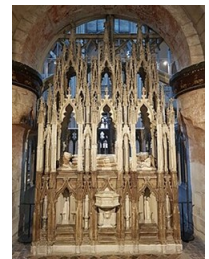
One of the most striking things about looking around the cathedral was the enormous amount of Norman (or Romanesque) architecture remaining, including the Crypt, the East End, the Chapter House and the pillars in the Nave, many of which are covered in masons' marks. The Nave was dressed with beautiful floral displays ready for Advent.

Gloucester is also the birthplace of Perpendicular Architecture, as Edward III sent the royal masons to experiment with a new French style for the burial of his father. You can see the results in the Quire and Presbytery. The Quire remained untouched for almost 500 years before undergoing extensive restoration work under the great Victorian architect Sir George Gilbert Scott.

The cloisters, used in the filming of the Harry Potter films, are another example of wonderful medieval fan vaulting. We were very lucky to see the cloisters dressed for Christmas, with balloons on the theme of "The 12 Days of Christmas" hung from the ceiling, and wonderful floral arrangements in a variety of colours arranged along the sides of the corridors. The tour ended with a chance to go down through a big red door to see the crypt.

By this time, two hours had flown by, and it was time for a much-needed buffet lunch in the Parliament Room. Then, everyone went their separate ways until it was time to return to the coach. Some went shopping, some to the Waterways Museum in the docks, and some never made it out of the Cathedral, as there was still so much to see.

All in all, it was an excellent day out, and some people were spotted having a nap on the coach on the way back, a sure sign of a day well spent!



## BADSEY FILM CLUB

The date of Badsey's Film Club is changing and moving to the second Saturday of each month. This is because of Peter's highly successful "Small Plates" nights in the restaurant!

Therefore, our next film will be on **Saturday, 10th January**, starting at 8 o'clock in the back room of the Wheatsheaf. We will be showing:



### Insomnia (15)

*Insomnia is a 2002 American neo-noir psychological thriller film. This is a remake of a 1997 Norwegian film, starring Al Pacino, Robin Williams, and Hilary Swank. The film follows two Los Angeles homicide detectives investigating a murder in Nightmute, Alaska. After the killer witnesses an accidental shooting committed by one of the detectives, they create a plan for both parties to mutually avoid prosecution.*

Date for Your Diary: The following month's film will be The Penguin Lessons. It will be shown on **Saturday, 14th February at 8pm.**

*A 2024 comedy-drama film starring Steve Coogan and Jonathan Pryce, where a disillusioned Englishman who goes to work in a school in a divided Argentina in 1976 finds his life transformed when he rescues an orphaned penguin.*

Everyone is welcome and entry is free, but we ask for an annual donation of £5.00 to cover our running costs. For more information, contact Alan Tutton on 01386 831539.

## Jane Neill's Nature Notes...



January is a great time to look at trees, and coppicing has been practised since Neolithic times. In the Middle Ages, coppiced woodlands of willow, hazel and sweet chestnut trees, in particular, were planted. They were cut to ground level while young to make 'stools' and left to grow multiple stems to supply fuel, house-building materials and hurdles. The growth (stands) produced scores of shoots left for 7 to 30 years, depending on requirements. The longer growth time encouraged wildlife such as mosses, lichen and fungi.



Pollarding is another ancient practice, now mainly seen in urban areas. The tree trunk is pruned at a height of 2-3 metres periodically. This encouraged finer growth and stopped the broad spread of branches. The Anglo-Saxons planted oak and beech in open pastures to pollard, providing pigs with acorns and mast to snuffle without shading the pastures.



Arthur Savory, in his book, wrote about willow ("withy" in Worcestershire) being the most valuable tree in Aldington, where he farmed. The poles, axed off the head of the pollarded trees, were tied into faggots for firewood, used to make hurdles and sold to crate makers in the potteries for packing. The local saying was "the withy tree would buy the horse, while the oak would only buy the halter"!



## RINGING IN THE NEW YEAR

Ring out the old, ring in the new,  
Ring happy bells, across the snow,  
The year is going, let him go,  
Ring out the false, ring in the true  
(Tennyson, 1850)

Did you hear us ring in the New Year? We rang in Badsey from around 11:40pm to midnight!

Following this, we're back to ringing on Monday nights from 7:30pm to 9pm; when most folks will be pulling on the curtains and watching TV on a dark January evening, we will be wrapping up for our practice night in a chilly bell tower.

It's so great to have somewhere to go and meet up with your pals and try to learn new methods on either six or eight bells (depending on how many ringers turn up) on a Monday evening, with a visit to the Wheatsheaf post-practice!

We have some visiting ringers from Worcester on Friday, 2nd January at 11:30am - 12:30pm. We also have a peal attempt on Tuesday, 24th February at 9:30am - this can last around three hours if they are successful!

We will also be ringing prior to any Sunday services.

## MEMORIAL TREES: A NEW PARISH COUNCIL SERVICE AT PEAR TREE FIELDS



Families and friends now have the opportunity to plant a tree in memory of a loved one.

A selection of tree species is available, allowing you to choose something long-lasting and meaningful.

Arrangements and payments can be made through the Parish Council, and the trees will be planted by their contractor in the field surrounding the cemetery.

A memorial plaque can also be added to accompany the tree.

**For more information or to enquire, please contact the Parish Clerk on 07591533557 or by emailing [badseyipc@yahoo.co.uk](mailto:badseyipc@yahoo.co.uk).**

**FREE SUPPORT  
FOR BADSEY AND ALDINGTON  
RESIDENTS**

**SERIOUS ILLNESS SUPPORT SERVICE  
HOSPICE CARE AT HOME SERVICE  
BEREAVEMENT COUNSELLING SERVICES**

If you have a life limiting illness, are caring for someone who has a life-limiting illness or are recently bereaved, call us now on: 01386 840505.

[www.campdenhomenursing.org](http://www.campdenhomenursing.org)



## HANDYMAN IN EVESHAM AND SURROUNDING AREAS



Painting & Decorating  
Electrical Work  
Flatpack assembly  
Wall mounting  
Curtains & window  
blinds fitting  
Damage repairs  
Plastering, Carpentry  
Deep cleaning  
Limited gardening  
Limited plumbing

☎ 07940 153488  
✉ [sarkyamir@gmail.com](mailto:sarkyamir@gmail.com)  
🌐 [www.handymanams.co.uk](http://www.handymanams.co.uk)



handymanams  
Handyman AMS

**bluebird  
care**

It's good to  
be home

Find out more

See how we  
can help your  
loved ones stay  
in the place  
they feel best.

Call us for a friendly chat on  
**01386 575 800**

Or email  
[worcesterandwychavon@bluebirdcare.co.uk](mailto:worcesterandwychavon@bluebirdcare.co.uk)

## Badsey & Aldington Parish Council

The Parish Council can be contacted by:

Email [badseypc@yahoo.co.uk](mailto:badseypc@yahoo.co.uk)  
Phone 07591 533557 (Mon - Thurs 9.30am to 3pm)  
Website [www.badseypc.uk](http://www.badseypc.uk)

**Date of next meeting:  
Weds 21st January**

Meeting starts at 7.30pm in the Remembrance Hall.

Parishioners are welcome to raise matters that they wish to bring to the attention of the PC at the beginning of the meeting. After that, they can stay to observe the meeting

### Useful Contacts

Badsey Remembrance Hall  
Badsey Community & Sports Club  
Badsey Church Bell Ringers  
Badsey Church Flower Guild

Marcelle Wilks 07776 300 959  
Sue Brooks 01386 830 867  
Tom Sandham 01386 834 070  
Julie Gardner 01386 832 007

### Organisations, Institutes and Societies

The Badsey Society  
Women's Institute

1st Badsey Scout Group  
1st Badsey Guides

Cafe Freedom  
Messy Church  
Slimming World

Shirley Tutton 01386 831 539  
Lucy Close  
[badseybellessec@wfedwi.org.uk](mailto:badseybellessec@wfedwi.org.uk)  
Adam Johnson 07510 042 307  
Siobhan Guyll  
[badseygirlguides@gmail.com](mailto:badseygirlguides@gmail.com)  
Tracy Hemming 01386 830 043  
Penny Christison 01386 830 367  
Bridget 07534 133 228

### Sports and Entertainment

Badsey Film Club  
Badsey Flower Show

Evesham & District Air Gun League  
Evesham Archery Club  
Model Engineering Club  
Evesham & Badsey Hockey Club  
Badsey Sea Shanty Group

Alan Tutton 01386 831 539  
Rosemary Smith  
[info@badseyflowershow.co.uk](mailto:info@badseyflowershow.co.uk)  
Ian Davies 01386 450 86  
Ian Trout 01386 831 509  
Roger Cull 01386 831 933  
Mark Watts-Jones 07973 963 539  
Bob Smith 01386 830666 or  
07972671622  
Lesley Dingley [ladingley@gmail.com](mailto:ladingley@gmail.com)

Wickhamford Gardening Club

### Local West Mercia Police Neighbourhood Officers

[Alexandra.prentice@westmercia.police.uk](mailto:Alexandra.prentice@westmercia.police.uk),  
[ben.trowman@westmercia.police.uk](mailto:ben.trowman@westmercia.police.uk)  
[luke.harris@westmercia.police.uk](mailto:luke.harris@westmercia.police.uk)

Would you like your organisation's contact information in our Community News? Just get in touch! Email us at [badseycn@gmail.com](mailto:badseycn@gmail.com), or send a direct message to our Facebook page.

### ADVERTISE YOUR LOCAL BUSINESS WITH US!

Reach more than 1,380 homes for just £20 per month! Local is best!  
and you can change your ad as often as you like! Call Ian Devine on 07779091340 or email at [iand3vin3@gmail.com](mailto:iand3vin3@gmail.com) for more details and to reserve your spot for 2026.

On behalf of the editorial team, we'd like to thank you for your contributions and making last month's issue a success!

If you'd like to contribute to future issues of the Community News, please either leave handwritten entries at 32 Seward Road, Badsey, or email [badseycn@gmail.com](mailto:badseycn@gmail.com)



**Thomson & Bancks**  
SOLICITORS  
You matter to us

**Expert legal services**  
Taking care of all your personal and business needs

**tbsolicitors.co.uk**

<b>Pershore</b> 01386 562000	<b>Tewkesbury</b> 01684 299633
<b>Cheltenham</b> 01242 235250	<b>Stratford-upon-Avon</b> 01789 295544



**Walter's** Restaurant  
& **The Wheatsheaf** Inn

- Best Cornish Hake fish & chips, enjoy with us or available for takeaway.
- En-suite rooms.
- Ales & full licensed bar.
- Weekly changed menus and special dining events, such as the ever popular 'Flavours of Asia' or 'Mediterranean Small Plates' evenings.
- Functions catered for.
- Regular live sports shown in the bar.

**01386 830 380**

[www.watw.restaurant](http://www.watw.restaurant) Find us on Facebook



**COTSWOLD HOME MAINTENANCE**  
Man About the House Home Improvements

Providing quality building & property services for over 20 years in the Vale of Evesham and the Cotswolds

- FITTED KITCHENS
- INTERNAL PAINTWORK
- FENCING & GATES
- PLUMBING
- PLASTERING
- ELECTRICAL WORK
- HARD LANDSCAPING



Contact Malcolm:  
**07970 050 495**  
01386 831 023  
[malcolm@cotswoldhomemaintenance.co.uk](mailto:malcolm@cotswoldhomemaintenance.co.uk)

Find us on Facebook

Corn Mill Road  
Evesham WR11 2LL

**01386 442004**  
[info@cwetld.biz](mailto:info@cwetld.biz)

Monday & Tuesday - 9.00am - 5pm  
Wednesday - 9.00am to 1pm  
Thursday & Friday - 9.00am - 5pm  
Closed Sundays & Bank Hols

