

TO BE LET

THE MANOR HOUSE, BADSEY, WORCESTERSHIRE.



BADSEY is 1 mile from Littleton and Badsey Station, Great Western Railway; 2 miles from Evesham, where there are Midland and Great Western Railway Stations, and 4 miles from Broadway Station, Great Western Railway. Post, Telegraph, Telephone, and Church in the Village.

THE HOUSE is of the Tudor period, the lower storey being built of stone, and the upper portion is a very fine example of half-timbering. The greater part of the roof is covered in with Cotswold Stone Tiles. The House is of great interest from an historical and antiquarian point of view. Considerable repairs are in course of execution.



The House contains:—

ON THE GROUND FLOOR.

SPACIOUS AND LOFTY ENTRANCE HALL, $18\frac{1}{2}$ ft. x 18 ft. containing open fire place with dog grate.

DINING ROOM, $19\frac{1}{2}$ ft. x $17\frac{1}{2}$ ft., containing open fire place.

HOUSE-KEEPER'S ROOM, 13 ft. x $10\frac{1}{2}$ ft., containing useful cupboards and panelled all round.

KITCHEN, $21\frac{1}{2}$ ft. x $12\frac{1}{2}$ ft., with old-fashioned open fire place, exposed ceiling joists and timbers.

LARGE PANTRY OR DAIRY, WASH-HOUSE, BACK ENTRANCE HALL, FRONT & BACK STAIRCASES, EARTH CLOSET OUTSIDE.

ON THE 1st FLOOR.

OAK PANELLED DRAWING ROOM, 19½ ft. x 19½ ft. 6 BED ROOMS.



ON THE 2nd FLOOR.

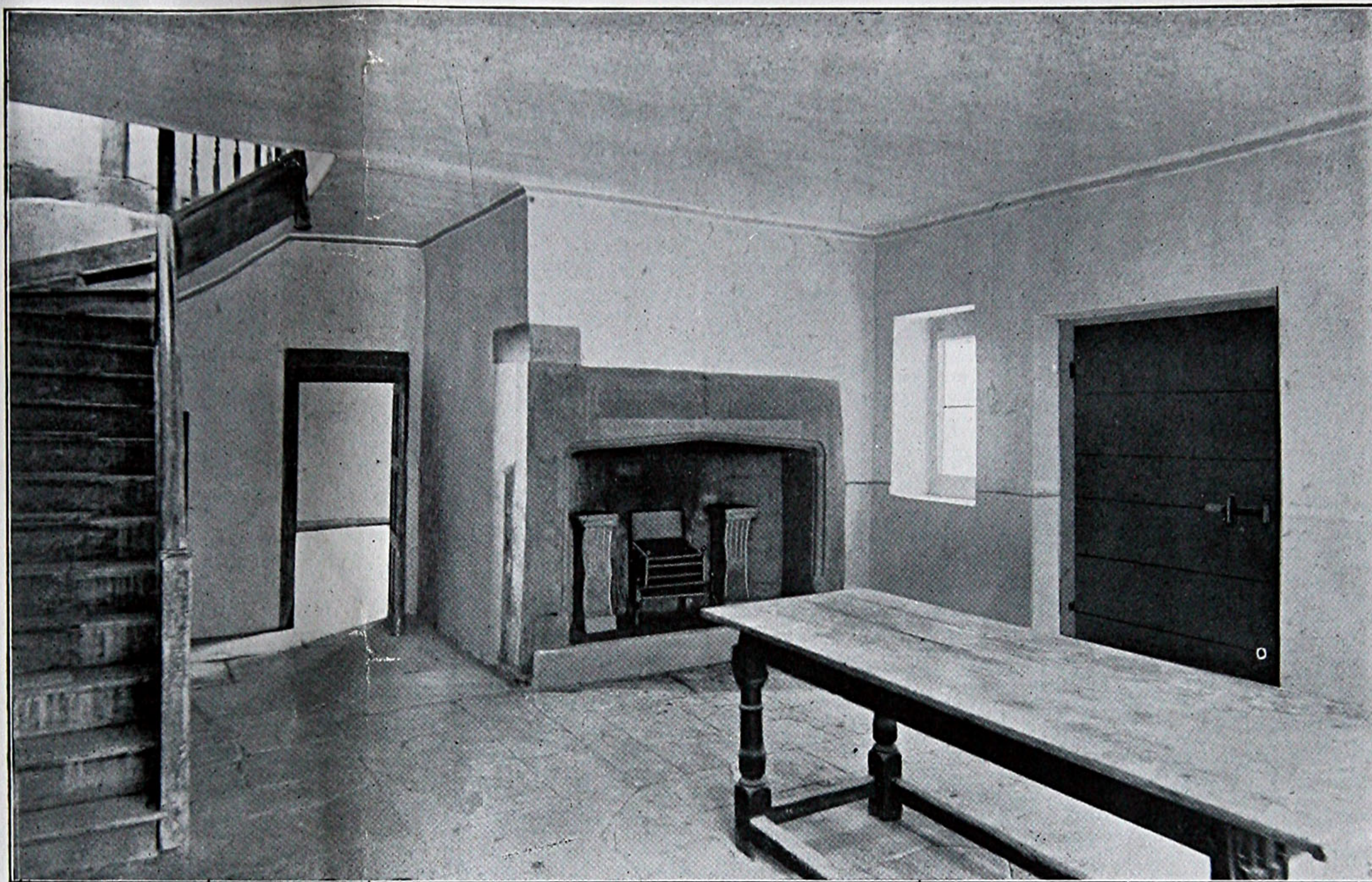
3 LARGE ATTICS.

THE OUTBUILDINGS consist of:

Stabling for 4 Horses, Harness Room, Loft, Carriage or Motor House,
Granary over Coal House, Cow House.

PLEASURE GARDEN of about 0a. 2r. 6p. in extent. A Croquet
Lawn has been laid out, and provision has been made for a full-sized
Tennis Court.

Adjoining the Garden is a PRODUCTIVE KITCHEN GARDEN, PASTURE ORCHARD AND Paddock of about 4a. 2r. 2p. in extent, planted with choice sorts of Apples, Plums, and Pears. These would be let with the House if required.



ENTRANCE HALL.

The Premises are supplied with most excellent spring water from a Well, but if desired by the Tenant, the Landlords would be willing to lay on water from the main which passes by the House, and also to fit up a Bath Room and inside W.C. The connection to sewer is laid.

The key may be obtained from Mrs. Wilson, Badsey House, Badsey.

For further particulars apply to

RAYMOND WEBB,

ESTATE AGENT,

EVESHAM.

HUNTING.

Capital Hunting may be had with the North Cotswold, the Croome, and the Warwickshire Hounds.

GOLF.

There are Golf Links at Broadway and Craycombe, each place being easily accessible by rail.

BOATING & FISHING.

Excellent Boating may be enjoyed on the beautiful (Shakespeare's) Avon, also very good fishing.

SHOOTING.

Rough Shooting can always be rented in the district at from 6d. to 1/- per acre.

NOTE.—A dwarf Wall of Stone, in character with the House, has been substituted for the Iron Railings shewn in the illustration and entrance gates will shortly be erected.

The Kitchen Garden, Pasture Orchard and Paddock are at present let on short tenancies, but could, if desired, be rented with the rest of the premises. There is no obligation to take them with the house if they are not required.