

SCHEDULE

110th ANNUAL



Badsey Flower Show

TO BE HELD ON

Saturday 21st July 2012

AT

Badsey Recreation Ground, Sands Lane

The Ground will be opened at 1.00 p.m.

Admission £3

OAP £2

Children £1

FREE CAR PARKING

**ENTERTAINMENT SPONSORED BY
THE ROUND OF GRAS, BADSEY**

Please don't forget Entry Night

Tuesday 17th July 2012 at Badsey First School 6.00-9.00 p.m.

Please Bring any Tombola Donations to Entry Night

Entries also accepted at Entries Box situated inside

Spar Stores, High Street, Badsey.

PLEASE TAKE EXTRA ENTRY FORMS



The one and only Round Of Gras

Round Of Gras, Bretforton Road, Badsey, Evesham. WR11 7XQ Telephone: 01386 830206



Uniquely called The Round of Gras since 1968 and the original home of the famous Asparagus auction, we take our Gras roots very seriously!

Not only do we offer an extensive Asparagus food menu, but you'll also find evidence of the Gras all around the pub. We pride our selves on our collection, from cutters tools from days gone by to intricate iron work woven into the fabric of the pub. We hope you savour the experience as much as the food.

OPEN 11:00am - 11:00pm DAILY ~ All Day Every Day

Regular Food Features & Events

• Quiz Night

Every other Thursday at 8.30pm Proceeds to the Air Ambulance

• Ladies Darts

Monday Evening

• Dominoes or Pool

Wednesday Night

• Live T.V. Sports

• Grill Night

Tuesday

• Sizzler Night

Friday



Round of Gras Carvery

probably the best carvery in town

£5.75 mid week

with a dessert £7.75

All Day Carvery

Sunday

Lunchtime Carvery

Tuesday, Wednesday, Thursday

Evening Carvery

Wednesday



Badsey Flower Show Committee 2012

Chairman – Gordon Boon

Vice Chair – Adrian Barradell **Hon. Treasurer** – Pat Sparrow

Minutes Secretary- Liz Cudd

Judges & Helpers– Lizzie Noyes -01386 831112

Publicity and Stall Holders-Adrian Barradell-01386 830036

Members

Michael Draper, Steve Entwistle, Roger Martin,
Rosemary Smith, Sandra Stanley, Neil Thould.

Dear Entrant,

Once again it is time to consider your entries for this years show. Please take the time to look at each section, especially classes 99 to 103 for 12 to 15 year olds. These classes have been re introduced following feedback after last years' show.

The committee decided to bring the date of this years show forward one week so as not to clash with the Olympics. However, you will discover that many of the classes that change each year celebrate the Queen's Jubilee and the sporting theme of the Olympics. Floral art, Photography and Children's classes in particular reflect these themes.

Last years show was one of the most successful for many years with the exhibits in the marquee making a significant contribution.

Following this years AGM a number of new volunteers have come forward to help with the show for which the committee are extremely grateful. Whether you have exhibited previously or are new to the show the committee thank you for your support and wish you an enjoyable day.

Gordon Boon-Chairman

Website address for Badsey Flower Show:

www.badseyflowershow.co.uk

RULES FOR EXHIBITORS

1. All Classes in all Divisions are open to all, with the exception of Division F, which is open only to those living within the Parish of Badsey and Aldington.
2. All exhibits must be the property of the Exhibitor and must have been produced by him/her on his/her own ground or have been in his/her possession for at least three months, except where otherwise required. Any breach of this Rule, proved to the satisfaction of the Committee, will disqualify the Exhibitor from competing at any further Show and any prizes awarded will be withheld. The Committee, having reason to believe that this Rule has been disregarded in the past, reserve to themselves the right to inspect the gardens of Exhibitors either before or after the Show. The Committee also reserve the right to refuse any entries. In case of dispute, any prize awarded will be withheld until the Committee has settled the matter.
3. The Committee will sit to receive entry slips and appropriate fees at: **BADSEY FIRST SCHOOL** from 6pm to 9pm on **TUESDAY 17th JULY 2012**. No entry will be accepted after this date. Entry slips, with the appropriate fee, may also be left in the 'Entries Box' in the Spar Shop, High Street, Badsey on, or before 5pm on July 17th. Entries may also be submitted on line at www.badseyflowershow.co.uk before 5pm on 17th July. The fee will then be collected on the morning of the show.
4. No Exhibitor shall take more than one prize in any one Class. If more than one exhibit is shown in any one Class, further entrance fees must be paid.
5. Prizes may be withheld at the discretion of the Judges.
6. Exhibitors should bring their exhibits on the morning of the Show and must provide plates, stands or holders for their flowers, fruit or vegetables. Exhibits will be received only between 8am and 10.30 a.m. All vegetables must be exhibited in a clean state. Exhibitors, before leaving the tent, should see that their exhibits are properly labelled and numbered.
ALL EXHIBITORS MUST LEAVE THE TENTS BY 10.45 a.m.
A WARNING-BELL WILL BE RUNG AT 10.30 a.m.
7. The Marquees will open at 2.00 p.m. and close at 5.00 p.m.
NOTHING EXHIBITED SHALL BE REMOVED FROM THE MARQUEES BETWEEN THESE TIMES.
8. A free admission-ticket to this year's Show will be given to all Exhibitors who pay £3.00 or more in entry fees.
9. The award of the Judges will be final. The Committee cannot alter the Judges' decision, except for a breach of Rule 2.
10. Whilst every care will be taken to protect the property of the Exhibitors the Committee cannot be held responsible for any loss or damage

THESE RULES WILL BE STRICTLY ENFORCED

BADSEY FLOWER SHOW

SHOW SCHEDULE 2012

DIVISION A

Entry fee 20p. Per class

Note: The Royal National Rose Society classifications are in use. Hybrid Tea is now Bush Large Flowered and Floribunda is now Bush Cluster Flowered

Flowers and Pot Plants		1 st Prize	2 nd Prize	3 rd Prize
Class	Rose Section	p.	p.	p.
1	Three Rose Buds, one variety or mixed	£1	60	40
2	One Vase, Bush Large Flowered, 3 Blooms, one variety	£1	60	40
3	One Vase, Bush Large Flowered, one Specimen Bloom	£1	60	40
4	One Vase, Rambler or Climbing, not more than 3 Sprays, one variety or mixed	£1	60	40
5	One Vase, Bush Cluster Flowered, 3 Stems, one variety or mixed	£1	60	40
6	One vase miniature roses three stems	£1	60	40
Class	Sweet Pea Section			
7	A Bowl to be judged for quality, and all-round decorative effect, any natural foliage or grasses may be used	£3	£2	£1
8	One Vase, 9 Stems, Distinct	£1	60	40
9	One Vase, 9 Stems, Mixed	£1	60	40
Class	Pot Plant Section			
10	One Planted Patio Pot, pot not to exceed 12 inches (30cm)	£1	60	40
11	One Plant in Flower, pot diameter not to exceed 10½ inches (27cm)	£1	60	40
12	One Plant Foliage, pot diameter not to exceed 10½ inches (27cm)	£1	60	40
13	One Fuchsia in Flower, pot grown, pot diameter not to exceed 10½ inches (27cm)	£1	60	40
14	One Orchid, pot grown, pot diameter not to exceed 10½ inches (27cm)	£1	60	40
15	One Begonia in Flower, pot grown, pot diameter not to exceed 10½ inches (27cm)	£1	60	40
16	One Cactus, pot diameter not to exceed 9 inches (23cm)	£1	60	40
17	One Succulent, pot diameter not to exceed 9 inches (23cm)	£1	60	40
Class	Cut Flower Section			
18	Three Vases, Cut Flowers, outdoor grown, one kind per vase	£3	£2	£1
19	Two Vases, Annuals, one kind per vase	£1	60	40
20	A Single Flower Button-Hole, own foliage	£1	60	40
21	One Vase, Garden Flowers, to face all-round	£1	60	40
22	Highest Number of Flower Varieties in a bowl / vase	£1	60	40
23	Three Blooms, floating in a bowl of shallow water - any variety of blooms - any shape of bowl	£1	60	40
24	One Vase, shrub, five stalks	£1	60	40
25	A nosegay / posy surrounded by a doyley not more than 15cm across	£1	60	40

DIVISION B

Entry fee 20p. Per class

The exhibitor must be 65, or over, at the date of the Show. The exhibitor's age must be shown on the Entry Form. All foodstuffs must be covered by clear plastic. All flowers, fruit or vegetables used, need not have been grown by the entrant, **UNLESS SPECIFIED**. Unless otherwise specified exhibits in all Classes must be made and arranged by **ONE PERSON**, the entrant.

Class		1st Prize	2nd Prize	3 rd Prize
	Seniors	p.	p.	p.
26	A Vase of Mixed Garden Flowers, to face all-round	£1	60	40
27	A Cake, any variety, any size	£1	60	40
28	Handicraft - One Item, Free-Choice, any medium	£1	60	40
29	Picture - painting or drawing, any medium (Any signature, or others means of identification, must be effectively covered)	£1	60	40
30	Novelty Item - 3 elements, own-grown - 1 flower in vase + 1 vegetable + 1 fruit	£1	60	40

DIVISION C

Entry fee 20p. Per class

RULES for FLORAL ART and reasons for disqualification of entries: -

Exhibit will be marked "Not according to schedule"

- 1 Not complying with the Schedule in respect of content and maximum sizes shown.
- 2 The cut ends of all fresh plant material must be in water or water retaining material.

N.B. (Strong fibrous stems can be out of water)

- 3 The use of artificial plant material is **not** allowed **unless specified in the Schedule**

Class		1st Prize	2nd Prize	3 rd Prize
	Floral Art	p.	p.	p.
31	"The Olympics" A freestanding pedestal exhibit, competitor to bring their own pedestal. Some artificial plant material can be included	£3	£2	£1
32	"Going for Gold"- An exhibit Size 24ins(61cms) width x 24ins(61cms) depth x height unlimited	£2	£1	50
33	"The Queens Diamond Jubilee"- An exhibit Size 24ins(61cms) width x 24ins(61cms) depth x height unlimited	£2	£1	50
34	"Let's Party"- An exhibit for a buffet table. To be viewed from the front. Size 24ins(61cms) width x 24ins(61cms) depth x height unlimited	£2	£1	50
35	"Our England" A foliage exhibit to include an accessory. Size 18ins (46cms) width x 18ins (46cms) depth X 18ins (46cms) height.	£2	£1	50
36	"A corsage for a special occasion"- Artificial/dried plant material 10ins (25cms)	£2	£1	50
	Novices Classes (For those who have never won a first prize for floral art)			
37	"Celebrations" An exhibit of your choice 24"(61cms)width, 24"(61cms) depth, height unlimited.	£2	£1	50

DIVISION D

Entry fee 20p. Per class

Class		1st Prize	2 nd Prize	3rd Prize
	Vegetables	p.	p.	p.
38	A Collection of Four different kinds of Vegetables	£3	£2	£1
39	Nine Pods of Peas	£1	60	40
40	Nine Pods of Dwarf French Beans	£1	60	40
41	Seven Cherry Tomatoes, on a paper plate	£1	60	40
42	Five Pods of Runner Beans	£1	60	40
43	Five Pods of Broad Beans	£1	60	40
44	Five Kidney Potatoes, to be named	£1	60	40
45	Five Round Potatoes, to be named	£1	60	40
46	Five Onions, Dressed, tops not to exceed 3 ins. (76mm)	£1	60	40
47	Five Beets, Round, tops to be trimmed to 3 ins. (76mm)	£1	60	40
48	Five Carrots, Long Rooted, tops to be trimmed to 3 ins. (76mm)	£1	60	40
49	Five Carrots, Stump Rooted, tops to be trimmed to 3 ins. (76mm)	£1	60	40
50	Three Courgettes	£1	60	40
51	Five Tomatoes	£1	60	40
52	One Vegetable Marrow, fit for the table	£1	60	40
53	One Dwarf Cucumber	£1	60	40
54	One Standard Cucumber, frame or glasshouse	£1	60	40
55	One Bunch of Salad Onions, bunch not less than 3ozs (85gms)	£1	60	40
56	Twelve Shallots, pickling, not to exceed 1 inch (25mm) in diameter	£1	60	40
57	A Collection of bunched, Fresh Herbs	£1	60	40
58	One Pot of single variety Herb, home grown, pot not to exceed 8 ins. (20cm) in diameter	£1	60	40
59	One Dish of any other Vegetable - not specified above	£1	60	40
60	Novelty Item - The Funniest Vegetable	£1	60	40

DIVISION E

Entry fee 20p. Per class

Class		1st Prize	2 nd Prize	3rd Prize
	FRUIT	p.	p.	p.
61	Collection of Fruit, Three plates, Three kinds, one kind per plate, outdoor	£1	60	40
62	One dish of Raspberries	£1	60	40
63	One dish of Gooseberries	£1	60	40
64	One dish of any other Fruit	£1	60	40
65	Three sticks of Rhubarb, top trimmed	£1	60	40

DIVISION F

Entry fee 20p. Per class

Note: As all the Classes in this section are judged in-situ, they are open for the residents living within the Parish of Badsey and Aldington only. (Prizes may be given as vouchers)

Class	Gardens	1st Prize p.	2nd Prize p.	3 rd Prize p.
66	Most Attractive Garden - large or small – must be visible from the road or public footpath, contributing to the appearance of the Village	£30	£10	£5
67	Hanging Basket - judged at your home – must be visible from the road, contributing to the appearance of the Village	£5	£3	£2
68	Garden Tub (Any planted container) - judged at your home - must be visible from the road, contributing to the appearance of the Village	£5	£3	£2

DIVISION G1

No Entry fee

All entrants in this division must be within the ages specified at the date of the Show

All entries in these Classes must be made and arranged only by one person

Exhibits in these Classes must be made and arranged only by the entrant

The Age of the entrant must be shown on the Entry Form

All food stuffs are to be covered with clear plastic

Any signature or means of identification must be effectively covered

Any flower, plant, fruit or vegetable used, need not be grown by the entrant

Class	Children Under 5 years of Age	1st Prize p.	2nd Prize p.	3 rd Prize p.
69	A Model of a Flower - made from plasticine / PlayDough type material	50	40	30
70	A picture, not exceeding A3 sized paper - 12 ins. x 17 ins. (30 cm x 42 cm), depicting "A House", tracing excluded	50	40	30
71	Novelty animal, made from any type of vegetables or fruits	50	40	30
72	Decorated potato	50	40	30
73	Decorated paper plate, using flowers	50	40	30
74	Paint a face mask	50	40	30
	Children 5, 6 & 7 Years			
75	A picture, not exceeding A3 size - 12 ins. x 17 ins. (30 cm x 42 cm), depicting "Olympics", tracing excluded	50	40	30
76	Novelty animal made from any type of vegetables or fruits	50	40	30
77	Bling up your Teddy Bear, maximum size, 12 inches (30cm)	50	40	30
78	A decorated table tennis ball	50	40	30
79	A Floral Decoration in an egg cup	50	40	30
80	Decorate Two digestive biscuits	50	40	30
81	Decorate a Plant Pot, maximum size, 6 inches (15cm)	50	40	30
82	One photograph, unmounted and unframed, taken by the entrant of "Sport", maximum size 5 inches x 7 inches (13cm x 18cm)	50	40	30
83	Poetry, write a poem about 'Winning' to be written on one side of A4 sheet in a plastic sleeve, entries to be submitted on Show day, No name to be written on your entry – a number will be given.	50	40	30

Badsey Flower Show

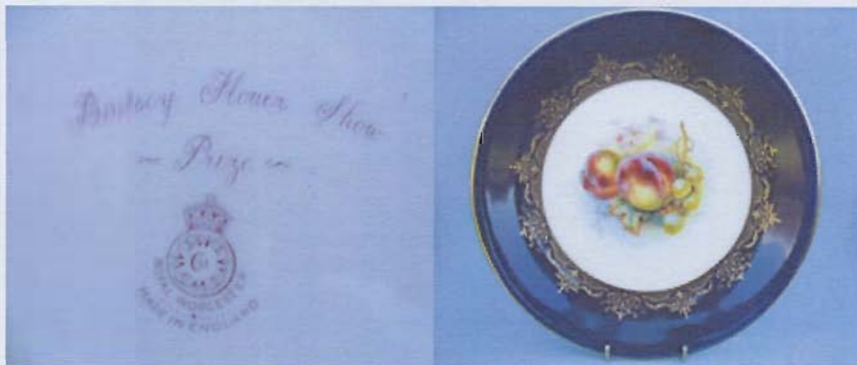
In the beginning...

The first show was held in 1888, and up to 1936 was held on a Wednesday, often at the start of August. Records of the early Flower Shows are still in the possession of the Flower Show Committee, the earliest being that of the 1900 show - known at the time as the Badsey, Aldington & Wickhamford Flower Show. Comments included:

Between the Wars

In the 1920s, the Flower Show moved to the Recreation Ground. A typical Show would run from 2pm to 9pm, and raise around £130 from entrance and entry fees - with over half of this given out as prizes for the Horticultural sections of the Show

Prizes at the time included plates by Royal Worcester, with the examples below being from



1925 and signed by leading Royal Worcester artist William Bagnall.

Thanks to Roger Eborall for sending us these photographs and giving us permission to show them here

The 1970s to the present day

The show is now held on the nearest Saturday to St James Day, and has now been held every year except for the extreme wet weather of 2006 & 2007. Last year's Flower Show saw 200 exhibitors across 146 classes contributing to a very successful show. A variety of entertainment is provided throughout the afternoon with many traditional and local stalls as well.

You can buy a DVD of the 2005 Badsey Flower Show at Badsey.net



Badsey Flower Show



Images



CUP AND TROPHY WINNERS – 2011

CUP AND TROPHY TITLE

THE SIR JULIUS SLADDEN CHALLENGE CUP
THE A.C.SPARROW MEMORIAL CUP
THE EDGAR OLIVER CUP
THE IAN SIMMONDS TROPHY
THE G.H.STEWART CUP
THE MARY LESTER MEMORIAL CUP
C.A.BINYON CUP
THE E.M.NORTON TROPHY
THE A.J.BRAZIER CUP
THE TED WHEATLEY CUP
THE TONY FOWLER CUP
THE T CUP
THE RON JONES CUP
THE WINNIE JONES MEMORIAL CUP
THE HENRY KING CHALLENGE CUP
THE ORGINAL GH STEWART CUP
THE SEWARD HOUSE TROHPY
THE W.HATCH & P.SANDFORD CHALLENGE CUP
THE WILL DALLIMORE LITERATURE CUP
THE ELLEN EXON CUP
THE CARRIE JOHN CUP

AWARDED TO

VERONICA LAIGHT (most points in the Show)
VERONICA LAIGHT (most points for Flowers)
HAZEL STEWART (most points for Roses/Sweet Peas)
ELIZABETH BOLLAND (Best Garden)
VERONICA LAIGHT (Floral Art)
VERONICA LAIGHT (best exhibit in Floral Art)
MARTIN ENSTONE & VAL PADFIELD
(most points for vegetables)
D. R.CRANE (most points for Fruit)
GEORGIE DAY & LEILA DAVIES
(most points Pre-School)
MOLLY SELICK (most points 5-7 yr. old)
ANNIE GREEN (most points 8-11 yr. old)
VERONICA LAIGHT (Chairman's Choice)
JOHN WATERHOUSE (Best Tub or Hanging Basket)
VERONICA LAIGHT (Most points in Senior Classes)
ROSEMARIE DAVIES (Most entries in Show)
LINDA JELFS (Adult – Domestic Classes)
JEANNE BOON (Adult - Arts)
JEFF NICE (Adult - Photography)
ROSEMARIE DAVIES
(Adult - A prose or poem 'The Races')
VERONICA LAIGHT (Collage – Theme – The Shore)
JEANNE BOON (Adult - Handicrafts)

Please return Cups by 10th July 2012
to
Lizzie Noyes 4 High Street, Badsey.

DIVISON G1 Contd

Class		1st Prize	2nd Prize	3rd Prize
	Children 8, 9, 10 & 11 Years	p.	p.	p.
84	Picture of 'Olympics ', not exceeding A3 size - 12 ins. x 17 ins. (30 cm x 42 cm), tracing excluded	50	40	30
85	A face made from any type of Vegetables or Fruits	50	40	30
86	Decorated Pebble / Stone	50	40	30
87	Design a face on a Paper Plate, using any materials	50	40	30
88	Floral Decoration in an 8 inch (20 cm) or smaller Basket	50	40	30
89	Nine Home made sweets on a paper tea plate	50	40	30
90	Decorate Five Fairy Cakes on a paper plate	50	40	30
91	Five Flap Jacks on a paper plate	50	40	30
92	Handicraft - Decorative Card, one item, free choice	50	40	30
93	Handicraft - Soft Toy, one item, free choice	50	40	30
94	Handicraft - Cross-Stitch, Cushion, Tapestry, one item, free choice	50	40	30
95	Handicraft - Models, one item free choice, original design, not kit form	50	40	30
96	Handicraft - Models, one item, free choice, kit form, including Lego type etc	50	40	30
97	One photograph, unmounted and unframed, taken by the entrant of "Sport", maximum size 5 inches x 7 inches (13cm x 18cm)	50	40	30
98	Design an Olympic Winners medal	50	40	30
	Young People 12, 13, 14 & 15 Years			
99	Design a CD cover for a Pop Group	50	40	30
100	A computer generated piece of art on the theme of 'the Olympics'	50	40	30
101	Five Plain Scones	50	40	30
102	Three Ginger-Bread Men	50	40	30
103	Victoria Sponge Cake, round, approximately 7 inches (18 cm) across	50	40	30

DIVISION G2

No Entry fee

All entrants in this Division will be pupils of Badsey First School
The work will be part of the school topics.
Any medium can be used.

BADSEY FIRST SCHOOL ART ENTRIES

Class		1st Prize	2nd Prize	3rd Prize
	Early Years	p.	p.	p.
104	Children to be advised by Badsey School	50	40	30
	Key Stage 1			
105	Children to be advised by Badsey School	50	40	30
	Key Stage 2			
106	Children to be advised by Badsey School	50	40	30

DIVISION H

Entry fee 20p. Per class

All entries in these classes must be made and arranged only by ONE PERSON.

All food-stuffs must be covered by clear plastic film. The entrant need not grow any fruit or vegetable used. Exhibits in these Classes must be made and arranged only by the entrant

All preserves should be clearly labelled with date when made.

Class	Domestic	1st Prize p.	2nd Prize p.	3rd Prize p.
107	One Loaf of Home-Made Bread - NOT MACHINE MADE	£1	60	40
108	Dessert using a seasonal fruit, portion for one.	£1	60	40
109	Five Cup Cakes on a paper plate.	£1	60	40
110	Six rock cakes on a paper plate on a paper plate	£1	60	40
111	Five Sausage Rolls, short crust pastry, on a paper plate	£1	60	40
112	Five Fruit Scones on a paper plate	£1	60	40
113	One Round of Shortbread, maximum 9 inches (23cm) across, scored into 8 sections	£1	60	40
114	Ginger Bread, to be baked in a Square or Oblong tin, presented out of the tin	£1	60	40
115	Five Home-Made Flap Jacks, any variety, on a paper plate	£1	60	40
116	Lemon Drizzle Cake	£1	60	40
117	Victoria Sponge Cake, Round, approximately 7 inches (18cm) across	£1	60	40
118	Fruit Cake, to be baked in a 6 inch (16cm) Round tin (Recipe for this Fruit Cake is at the foot of this page)	£1	60	40
119	Five Ginger Breads on a paper plate	£1	60	40
120	Treacle Tart with lattice top, up to 8 inches (20cm) across	£1	60	40
121	A Carrot cake, in square or rectangular tin, presented out of tin	£1	60	40
122	Grandma's Basket (see below)	£1	60	40
123	A plain, clear Jar of Jam, Stone Fruit, top sealed with wax disc and cellophane cover	£1	60	40
124	A plain, clear Jar of Jam, Soft Fruit, top sealed with wax disc and cellophane cover	£1	60	40
125	A plain, clear Jar of Marmalade, top sealed with wax disc and cellophane cover	£1	60	40
126	A plain, clear Jar of Lemon Curd, top sealed with wax disc and cellophane cover	£1	60	40
127	A plain, clear Jar of Chutney (minimum 2 months old), any variety, top sealed with a non-metallic cover	£1	60	40

'Grandma's Basket'

To contain three small cakes, a small jar of jam, jelly or marmalade and a posy of garden flowers

Recipe – Creaming Method

6 oz (170g) Self Raising Flour – 6oz (170g) Mixed Fruit – Milk/Water
4oz (113g) Castor Sugar – 4oz (113g) Margarine - 2 Eggs

Baking recommended at Gas Reg 4 or Elec. 350F/180C for approx 1 hour

DIVISION I

Entry fee 20p. Per class

All entries must be made and arranged only by ONE PERSON except Classes 148 & 149
Exhibits in these Classes must be made and arranged only by the entrant
Any Signature, or other means of identification, must be effectively covered

		1st Prize	2nd Prize	3rd Prize
Class	Handicrafts & Arts	p.	p.	p.
128	Handicraft - Knitting - 1 item - hand-knitted garment	£1	60	40
129	Handicraft - Dressmaking - 1 item - Free choice	£1	60	40
130	Handicraft - Cushion - 1 item - Any Medium - Free choice	£1	60	40
131	Handicraft - Soft Toy - 1 item - Free choice	£1	60	40
132	Handicraft - Embroidery - 1 item - Free choice	£1	60	40
133	Handicraft - Cross-Stitch - 1 item - Free choice	£1	60	40
134	Handicraft - Tapestry / Canvas-Work - 1 item - Free choice	£1	60	40
135	Handicraft - Patchwork / Quilting - 1 item - Free choice	£1	60	40
136	Handicraft - Decorative Greeting Card - 1 item - any medium	£1	60	40
137	Handicraft - Woodwork or Metalwork - 1 item - original construction, not kit form	£1	60	40
138	Handicraft - Models - 1 item, any medium	£1	60	40
139	Hand-painted Pebble - maximum dimension no larger than 6 inches (15cm)	£1	60	40
140	Picture - Painting or Drawing, any medium (Note: any Signature to be effectively covered)	£1	60	40
		1st Prize	2nd Prize	3rd Prize
Class	Photography	p.	p.	p.
141	Photograph - unframed and unmounted, taken by the Entrant, of "Swimming", maximum size 5 ins. x 7 ins. (13cm x 18cm)	£1	60	40
142	Photograph - unframed and unmounted, taken by the Entrant, of "Cycling", Maximum size 5 ins. x 7 ins. (13cm x 18cm)	£1	60	40
143	Photograph - unframed and unmounted, taken by the Entrant, of "Ball Game", Maximum size 5 ins. x 7 ins. (13cm x 18cm)	£1	60	40
144	Photograph - unframed and unmounted, taken by the Entrant, of "Horses", Maximum size 5 ins. x 7 ins. (13cm x 18cm)	£1	60	40
145	Photograph - unframed and unmounted, taken by the Entrant, of "Boats", Maximum size 5 ins. x 7 ins. (13cm x 18cm)	£1	60	40
146	Photograph - unframed and unmounted, taken by the Entrant, of "Exhausted", Maximum size 5 ins. x 7 ins. (13cm x 18cm)	£1	60	40
		1st Prize	2nd Prize	3rd Prize
Class	Literature	p.	p.	p.
147	Literature - Write a prose or poem maximum 300 words entitled 'Winning'. Entries preferably typed, to be written on one side of A4 paper in a plastic sleeve. Entries to be submitted on Show day. No name to be written on your entry - a number will be given.	£1	60	40

CONTINUED OVERLEAF

1st Prize	2nd Prize	3rd Prize
-----------	-----------	-----------

Class **Creative Class**

148 A "Sporty Scarecrow" any size any medium.

p.	p.	p.
£3	£2	£1

149 A Crazy Creation e.g. Onion attached to a spring becomes a Spring Onion.

£1	60	40
----	----	----



Premier

a great deal more from your local store

SOUTH LITTLETON STORES

Camfields Limited

MAIN STREET

SOUTH LITTLETON

EVESHAM

TEL: 01386 831449

YOU'RE LOCAL CONVENIENCE STORE

Cups and Trophies

SIR JULIUS SLADDEN CHALLENGE CUP

Presented by Sir Julius Sladden, awarded for the exhibitor with most points in DIVISIONS A, C, D & E

A.C. SPARROW MEMORIAL CUP

Presented by Messrs. F. C. and A. W. Sparrow, awarded for the exhibitor with the most points in DIVISION A

EDGAR OLIVER CUP

Presented by the family of Edgar Oliver, awarded for the exhibitor with the most points in CLASSES 1 to 9 inclusive

IAN SIMMONDS TROPHY

Presented by Sue Simmonds, awarded to the winner of CLASS 66

G. H. STEWART CUP

Presented by Mr. G. H. Stewart, awarded to the exhibitor with the most points in DIVISION C

MARY LESTER MEMORIAL CUP

Presented by Mrs. H. Stewart, awarded to the best exhibit in DIVISION C

C. A. BINYON CUP

Presented jointly by Mr. C. A. Binyon and the Society, awarded to the exhibitor with the most points in DIVISION D

E. M. NORTON TROPHY

Presented by Mr. S. J. Norton, awarded to the exhibitor with the most points in DIVISION E

A. J. BRAZIER CUP

Presented by A. J. Brazier, awarded to the exhibitor with the most points in CHILDREN'S CLASSES 69 to 74

TED WHEATLEY CUP

Presented by Peggy Wheatley, awarded to the exhibitor with the most points in CHILDREN'S CLASSES 75 to 83

TONY FOWLER CUP

Awarded to the exhibitor with the most points in CHILDREN'S CLASSES 84 to 98

T CUP

Presented by the Boon Family, awarded to the exhibitor with the most points in CLASSES 99 to 103

RON JONES CUP

Presented by R. V. Jones, awarded to the exhibitor with the best overall exhibit in CLASSES 67 and 68

WINNIE JONES MEMORIAL CUP

Presented by R. V. Jones, awarded to the exhibitor with the most points in DIVISION B

HENRY KING CHALLENGE CUP

Presented by H. W. King, awarded to the exhibitor with the most entries in the show

THE ORIGINAL G H STEWART CUP

Re-Presented by the family of Mr R V Jones and awarded to the exhibitor with the most points in DIVISION H

SEWARD HOUSE TROPHY

Presented by Seward House Nursing Home, awarded to the exhibitor with the most points in the CLASSES 136 to 140

W.HATCH & P.SANDFORD CHALLENGE CUP

Presented by their families, awarded to the exhibitor with the most points in the CLASSES 141 to 146

WILL DALLIMORE LITERATURE COMPETITION CUP

Presented by Will Dallimore, awarded to the winner of CLASS 147

ELLEN EXON CUP

Presented by Sid Norton, awarded to the winner of CLASS 148

CARRIE JOHN CUP

Presented by the family of Carrie John, awarded to the exhibitor with the most points in the CLASSES 128 to 135

.....
POINTS AWARDED – for each Cup/Trophy, shall be

FIRST PRIZE = 3 points SECOND PRIZE = 2 points THIRD PRIZE = 1 point

CLASSES- 38 & 61 shall be – FIRST = 6 points; SECOND = 4 points; THIRD = 2 points
.....



THE WHEATSHEAF INN



The Wheatsheaf Inn

The Inn sits at the centre of the village of Badsey, in the Vale of Evesham, famous for its crops and market gardening. Dating back to the 17th Century the beautiful historic building which was once a farm and a bakery, is now fully re-furnished and offers a Pub and Restaurant with a Function Room for private parties and business meetings. We also offer Bed and Breakfast accommodation.



RESTAURANT
& BAR



BED & BREAKFAST
ACCOMMODATION



FUNCTION
ROOM HIRE



International Night
Every Wednesday

Happy Hour

4.00pm—6.00pm

Opening Hours

Monday, Tuesday
4.00pm - 11:00pm

Wednesday to Thursday
11.30am - 2.00pm
4.00pm - 11:00pm

Friday, Saturday, Sunday
11.30am - 11.00pm

Sunday
12.00noon - 0.30am

Restaurant

Our Restaurant is tastefully decorated and in keeping with the Cotswold stone walls and wooden beams. We pride ourselves on home cooked food made with local produce wherever possible. [Our menu](#) has a mix of traditional pub meals along with regularly changing specials.

Bar

Our welcoming bar is a traditional English Bar with Open Beamed Ceilings. Catering for those not wishing to dine, we have a good selection of real ales including Draught Guinness, and 3 guest ales, Ciders and Lagers as well as regularly changing local guest ales and all the normal spirits and [good wines](#).

We have a TV for those 'sporting moments', and a darts board and gaming machines.



High Street, Badsey, Evesham, Worcester. WR11 7EJ

Telephone: 01386 830380



SPAR



SANCO BADSEY



SPAR STORES BADSEY

Sanco Limited

George Sangha

16 HIGH STREET

BADSEY

EVESHAM

TEL: 01386 830359

YOU'RE LOCAL CONVENIENCE STORE