

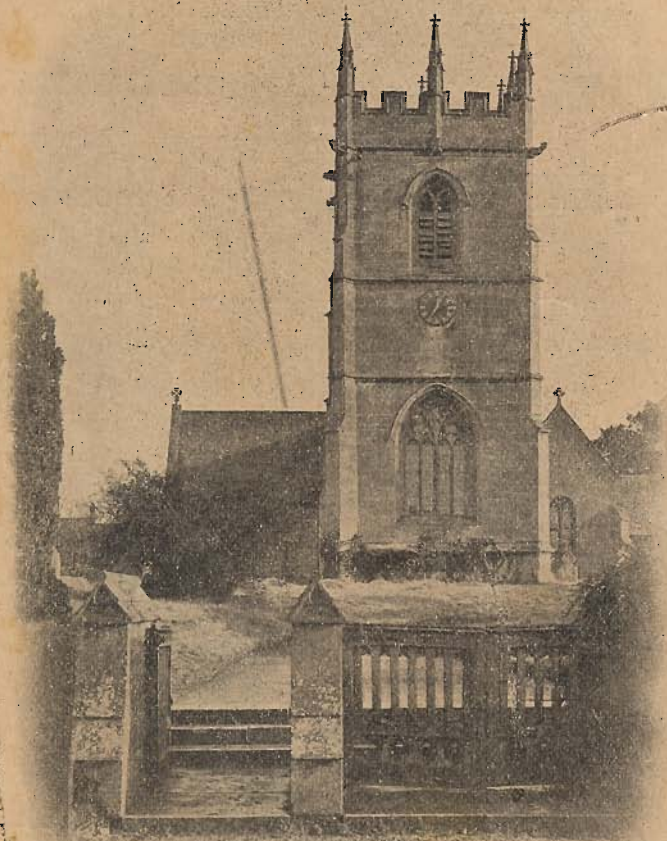
VOL. 9, NO. 10.

PRICE ONE PENNY.

OCTOBER, 1906.

---

**Badsey—with—Aldington and Wickhamford**  
*Parochial Magazine.*



EVESHAM :

W. & H. Smith, Ltd., The Journal Press.

# Badsey with Aldington & Wickhamford Parochial Magazine.

## THE NURSING CLUB.

At a meeting of the Nursing Club held at the Vicarage on Tuesday, September 11th, it was unanimously agreed to wind up the Club at the end of September, in accordance with the terms appended to the rules. The Nurse's total net receipts from the Club (subscriptions and fees) for the six months ended August 31st give an average annual income of £32, for which stipend it is of course absurd to expect to command the services of a professional nurse—especially one so able and skilful as Nurse Beesley. If any really general support had been given to the Club it would certainly have proved a success, but we know of people in Badsey who were not above accepting Nurse Beesley's services for nothing before the Club was formed, who have carefully refrained from contributing the modest penny per week. Without depending upon subscriptions, however, the Club might have succeeded if the Club Nurse had had the whole of the district work, and, before the Club was started, the Vicar received an assurance from Mrs. Stewart that she did not intend to practise again—but Mrs. Stewart has once more changed her mind.

We are already hearing expressions of anxiety as to the future, but it is extremely doubtful whether such anxiety will be allayed by the advent of another professional nurse. On one point, however, there can be no manner of doubt—should another nurse ever come to Badsey, she will be almost too good for this world, for only a woman possessed of faith, hope and charity of the celestial order would ever venture to settle in a parish where the last of her kind had been literally starved out. Nurse Beesley's new address is Ash Hurst, Great Hampton, and she asks us to state that she will always make an effort to attend any old Club members who may require her services.

## WICKHAMFORD HARVEST FESTIVAL.

The Harvest Festival was duly observed at Wickhamford on Sunday, September 23rd, the services consisting, as usual, of Holy Communion at 8.0, and Evening Prayer with Sermon at 6.30. There were 17 communicants, and at the evening service the ordinary seating

accommodation was insufficient for the large assembly of worshippers. The collections amounted to £2 5s. 9d., and were divided between the Evesham Cottage Hospital and the Church Schools Emergency League. In the course of his sermon the Vicar referred as follows to the allocation of the collections:—

“At the last three Harvest Festivals the whole of your offerings have been given to the Evesham Cottage Hospital, and no one regrets more than I myself that we are this year driven to diverting a portion of your contributions into another channel. The reasons which have led us to take this step must be fairly obvious, but, to avoid misunderstanding, it may be well, perhaps, to explain.

“Those of you who read last month's Parish Magazine were probably impressed by the extraordinary disproportion between the sum collected in the London Churches on Hospital Sunday last year, and the amount contributed by Nonconformist places of worship in the Metropolis. The Nonconformists have long claimed a numerical majority in the country, and it is consequently surprising to find that in the Metropolis last year the Church of England contributed close upon £40,000 to hospitals, whilst the Nonconformists together raised only £7,000. The denomination whose most prominent member has taken upon himself to voice the religious aspirations of England contributed £800. Now it would seem as though Churchmen must be either more numerous, or more wealthy, or more liberal than Nonconformists—or perhaps the causes of this disproportion are varied. For my part, I am inclined to think that Nonconformists have taken advantage of the Church's liberality in the matter of medical and other charities, to enable them to spend all the more on political organisation and general anti-Church propaganda.

“I should be sorry to see our hospitals—most of which are at present voluntary institutions—put on the rates, but no one can deny that such a course would be much more reasonable and morally justifiable than charging the rates with the support of propagation of a system of religion to which hundreds of thousands of ratepayers have the most deeply-rooted and conscientious objection. But, if Churchmen are to be compelled by law to bear an equal

share of the burden of the schools of Nonconformists, and in addition, bear the whole expense of their own schools, it is quite certain that the Church's contributions to many public institutions, such as hospitals, must be regretfully, but necessarily diminished.

"During the past twelve months the attack on the Church, through her schools, has been renewed, and Church Schools must now go under, or fight for their existence; and, to help in this good fight—the fight for all that Christ contended for, the fight for truth, for honesty, for justice and for freedom—the Church Schools Emergency League has been formed, and on behalf of this League we appeal to you to-night.

"You have given liberally of your avowed sympathy with the cause of Church Schools; you have given liberally of your signatures to petitions: show to-night that your sympathy is real and your names honourable by giving liberally of your substance."

Offerings of flowers, fruit, etc., were sent by Mrs. Cox, Mrs. G. Agg, Mrs. E. Pethard, Mrs. R. Taylor, Mr. Newman, Miss Pethard, Mrs. Walters, Mrs. Pethard, Mr. Hooper-Ingledew, Miss Chambers, Mr. Openshaw, Mrs. Hartwell, Mrs. Mason, Mrs. G. Halford, and Mr. Cull.

The work of decorating was successfully carried out by Mrs. Hands, Miss Hooper-Ingledew, Miss Hands, Mrs. G. Agg, Miss Pethard, Miss F. Pethard, Miss May Pethard, Mrs. Taylor, Miss Chambers, Miss Openshaw, Miss May Openshaw, Mrs. Hartwell and Mrs. G. Halford. The offerings in kind were (with the exception of a small portion distributed locally) divided between the Evesham Cottage Hospital and Christ Church Mission, Poplar.

#### LECTURE.

The Rev. F. D. Binyon's lecture on Wednesday, September 26th, drew a fair attendance, and those who were absent certainly missed much. Mr. Binyon evidently thoroughly understands the native mind and character, and gave a most interesting account of the trials and encouragements of the South African Missionary. The collection at the close of the lecture amounted to £1 1s. 6d.

#### NOTES AND NEWS.

The Parish Library will re-open for the winter on Monday, November 5th. It will be open every Monday evening from 5.30 to 6.

Miss Cicely Openshaw has very kindly undertaken the duties of organist at Wickhamford.

Picture post cards of Wickhamford Church and Manor House may now be obtained at Badsey Post Office.

The Coal and Clothing Club year ends on October 29th, and those who require coal are requested to notify the Treasurer not later than *Monday, October 15th.*

The Vicar has offered the post of Clerk and Sexton to Mr. E. Ballard, who has accepted it for a probationary period of three months.

### THE REGISTERS.

#### BADSEY.—BAPTISMS.

Sept. 2nd.—Frederick George Salter.  
 „ „ —Lilian May Salter.  
 „ 9th.—Doris May Hardiman.  
 „ 16th.—George James Bell.  
 „ „ —Reginald William Collett.  
 „ „ —Stella Mary Crisp.

#### BADSEY.—BURIAL.

Sept. 8th.—James Harris, aged 69 years.

### OFFERINGS FOR THE MONTH.

#### BADSEY. WICKHAMFORD.

	£	s.	d.	£	s.	d.
Sept. 2.—Sick and Needy ...	0	0	0	0	2	4
„ „ Church Expenses ...	0	17	5½	0	1	11
„ 9.—Sick and Needy ...	0	4	3½			
„ „ Church Expenses ...	0	15	3½	0	3	4
„ 16.—Sick and Needy ...	0	1	11	0	8	6
„ „ Church Expenses ...	0	12	1½			
„ 20.—Sick and Needy ...	0	0	9			
„ 23.—Sick and Needy ...	0	1	0			
„ „ Church Expenses ...	0	15	5			
„ „ Evesham Cottage Hospital ...				1	3	0
„ „ Church Schools' Emergency League...				1	2	9
„ 29.—Sick and Needy ...	0	0	7			
	£3	8	10	£3	1	10